

what: **World Conservation and Exhibitions Centre, British Museum**

The new Centre will provide world class facilities for visitors and researchers taking conservation, scientific research and collection management to a new level of excellence.

where: London, UK; 2007— 2014; Area 17,000m²

King Edward VII Building dominates Montague Place and the development of the north-west corner of the Museum site directly references it in the rhythm of the structural grid in the proposed scheme. Portland stone echoes the materiality of the existing Museum building. A contextual response to the site is manifest in the sympathetic palette of materials. The stone part of the façade of the pavilion makes a visual link to the King Edward VII building and the London School of Hygiene and Tropical Medicine through the horizontal coursing.

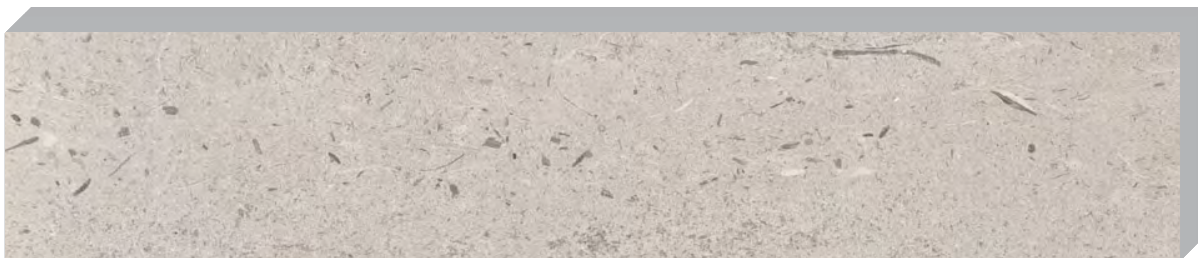
architects: Rogers Stirk Harbour + Partners (RSHP) (Barajas Airport in Madrid, Pompidou Centre in Paris, Lloyd's of London, the European Court of Human Rights in Strasbourg and the National Assembly for Wales)

structural engineers: Ramboll Whitby Bird; services engineers: Arup

contractors: Townscape Consultant: Francis Golding; Project Manager: AECOM; construction management: MACE



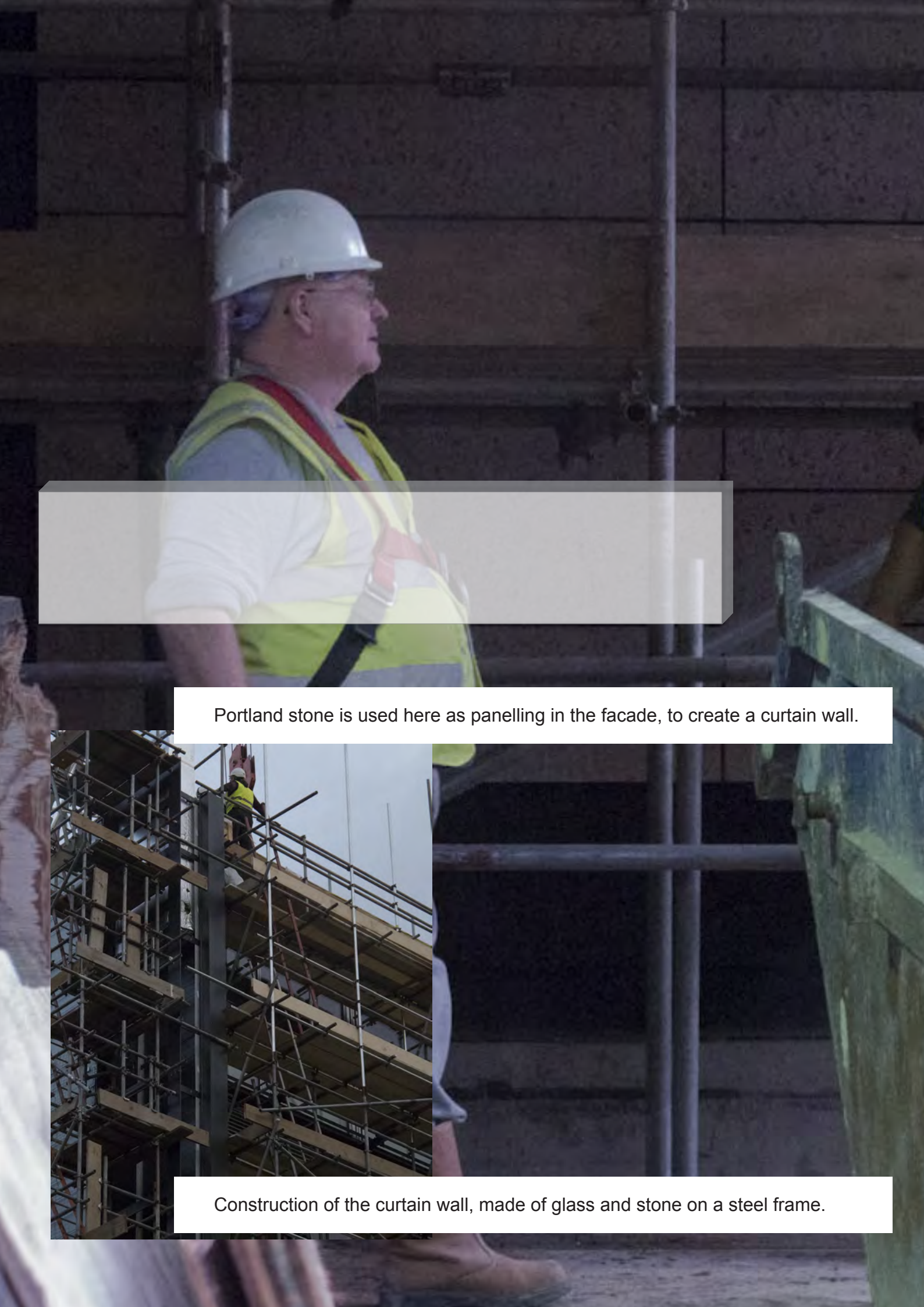
A rendered view and perspective section fragment of the circulation tower, which the curtain wall surrounds.



30 cm

4 cm

155 cm



Portland stone is used here as panelling in the facade, to create a curtain wall.

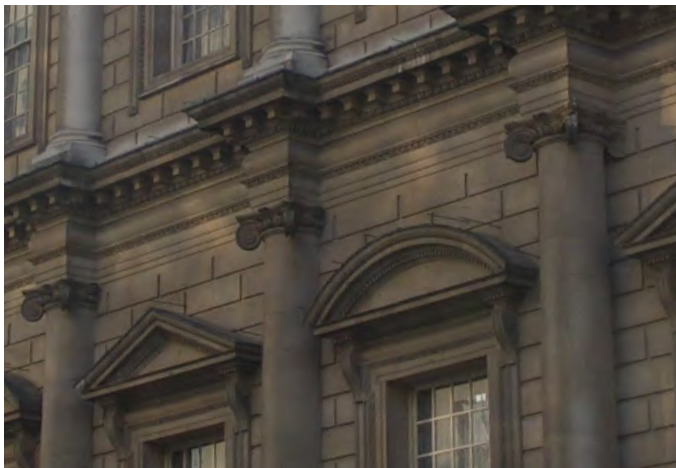


Construction of the curtain wall, made of glass and stone on a steel frame.



Coombefield Blocks
<http://en.wikipedia.org/wiki/File:CoombefieldBlocks.jpg>

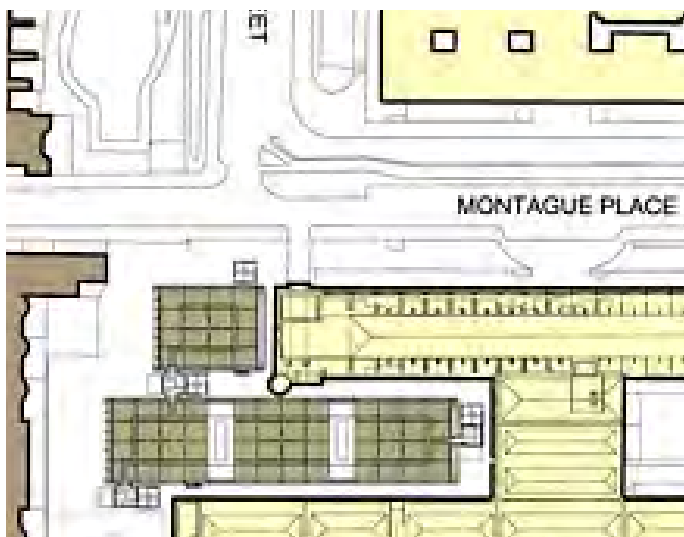
Portland stone is a limestone from the Tithonian stage of the Jurassic period quarried on the Isle of Portland, Dorset. The Island's stones are known to have been worked for nearly 1,000 years. From the early 1600s it started to become London's dominant stone, with Inigo Jones using it on Banqueting Hall, the stone having previously been used with success on elements of Westminster Abbey and the old gothic St Paul's Cathedral.



Banqueting Hall



London School of Hygiene and Tropical Medicine



King Edward VII Building dominates Montague Place and the development of the north-west corner of the Museum site directly references it in the rhythm of the structural grid in the proposed scheme. Portland stone echoes the materiality of the existing Museum building. A contextual response to the site is manifest in the sympathetic palette of materials. The stone part of the façade of the pavilion makes a visual link to the King Edward VII building and the London School of Hygiene and Tropical Medicine through the horizontal coursing.

materials study: Portland stone surrounds the development
<http://www.rsh-p.com/render.aspx?siteID=1&navIDs=1,4,25,1756,1762>