

61 Oxford Street / 11 Soho Street

Architects: Allford Hall Monaghan Morris
Civil & Structural Engineer: The Walsh Group

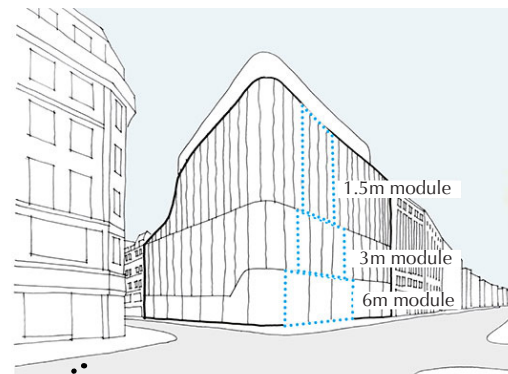
Joint venture with British Airways Pension Trustees and Duke-lease properties. A development consisting of a six storey mixed use scheme of 70,000 sq ft including a 35,000 sq ft retail store, two floors of offices and 6 residential units above which has been branded '11 Soho Street'. The site consists of a collection of buildings which form an L-shape on the corner of Oxford Street and Soho Street.



A post-tensioned reinforced concrete frame construction has been adopted for the building. This consists primarily of a 9.0m x 9.0m grid supported internally on columns of 600-650mm diameter. These columns support reinforced concrete slabs 250mm thick.

The concrete floor slabs are supported by internal concrete columns that are spaced on a 9.0m structural grid.

The Lantern is a continuation of the upper floor curved panels taken around the corner.



The design of the street facades incorporates flat and curved glass which creates a 'rippling' glass wall. The inner and outer glass of the double glazed panels have enamelled patterns on them, getting denser at the top and bottom of each panel. The glazed panels includes stainless steel trim at the top and at the base.

Six meter modules of flat and curved glass elements define the retail facade to ground and first floor. The upper floors are articulated by three meter modules with the variation in width taken up by flat glass panels, allowing the bespoke curved elements to remain the same throughout. The two top floors are composed of curved panels in 1.5m bays with one curved panel directly adjacent to another.