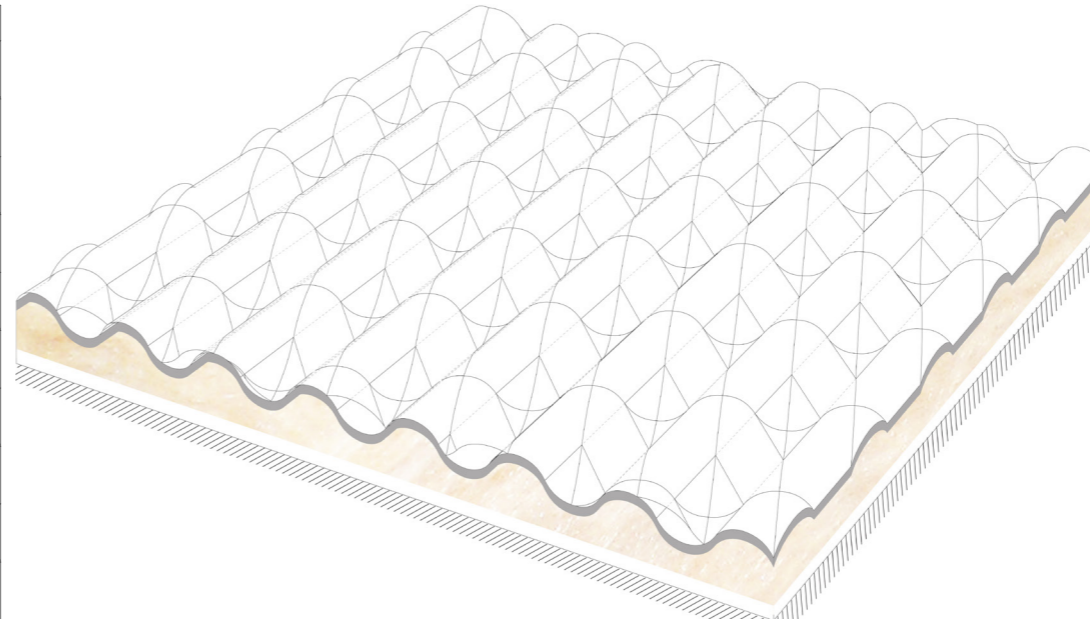
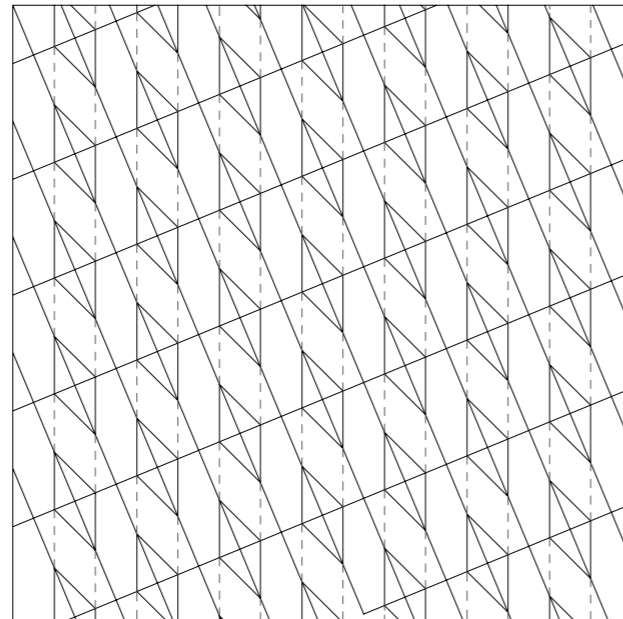
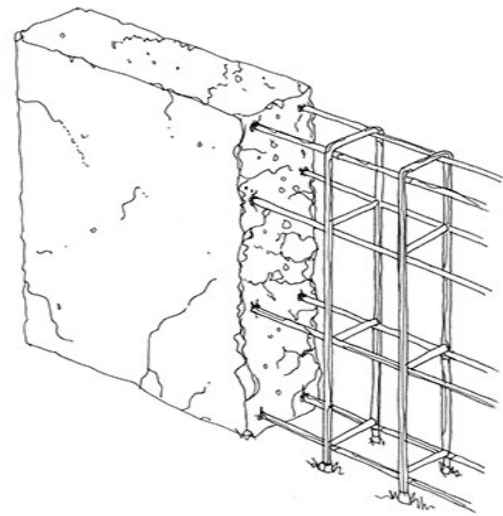


One-One Façade Proposal: *Nabil Randeree*

Material:
Re-enforced concrete

I plan to make a façade using corrugated re-enforced concrete. I chose re-enforced concrete, as it is a very strong material, which would have less damage done to it over time than many other materials. It can endure the colder temperatures in London well, and if it were used for a high-rise building it would also deal with any windy conditions. The rain and snow may pose an issue due to erosion such as freeze thaw, although if the concrete is reinforced by a rebar mesh, and is, it should be able to handle small expansions and contractions without too much damage.

I researched the works by Pier Luigi Nervi, looking at his use of re-enforced concrete, and in particular a project I saw in Rome where he corrugated concrete walls, which were surprisingly thin due to his use of thin steel mesh layers to re-enforce the concrete, rather than thicker rebar elements. I would like to use the idea of manipulating the surface shape of the concrete to enhance its strength. I would do this by making a façade with a double curvature or different types of pattern to the corrugation. I may also sandwich insulation foam, or another form of insulation between the concrete and the interior wall, enhancing the wall strength.



Drawing of proposed facade element.

