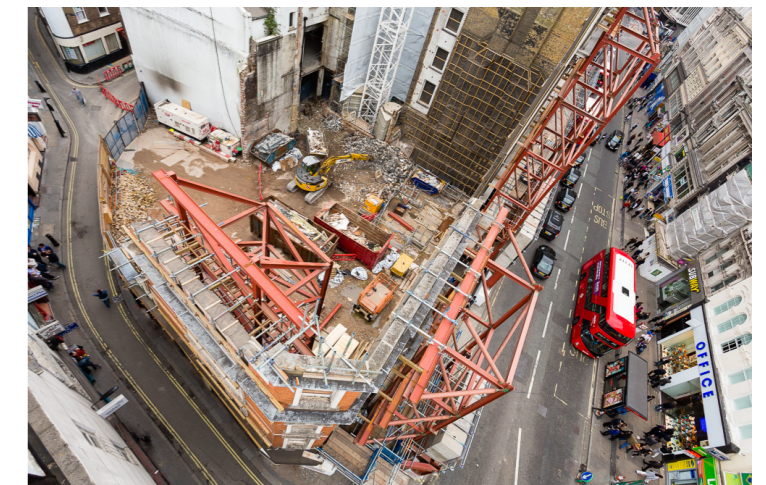
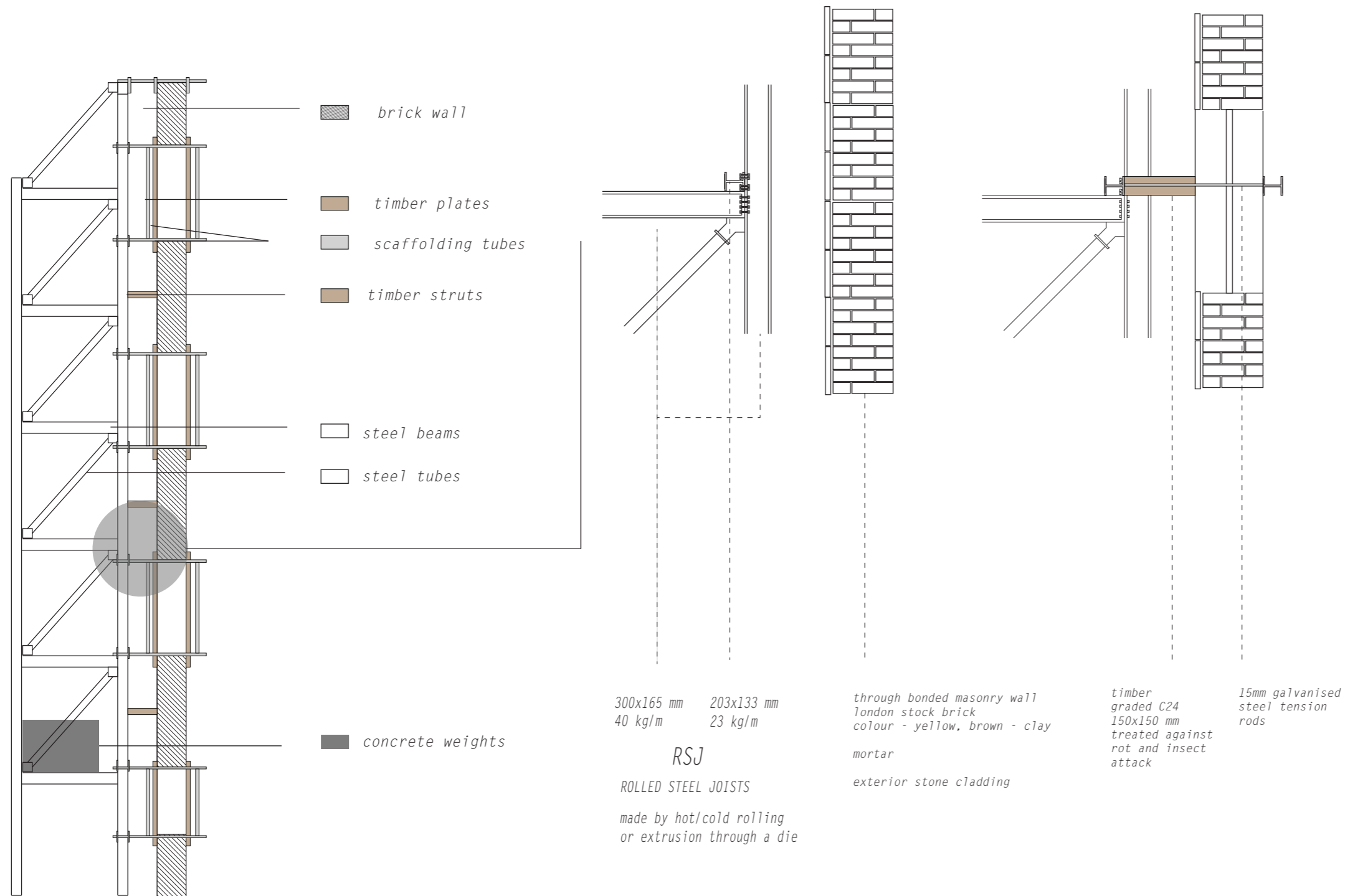


FACADE RETENTION 26-48 OXFORD STREET



During the demolition process of the 1920s building on the plot, the facade had to be retained. The main materials left on the site are now tripartite and red stone which the walls were made out of, and the materials used for the retention structure.

The main structure was constructed out of a combination of steel I-beams and steel tubes. The structure was clearly made out of steel because of the low costs of the material and manufacturing. It is relatively quick to set up: bolting and welding, and is very strong. The I-beams behave very well in bending.