

**Gian Andrea Diana**  
**TS2 Materials** - Second Year  
**1:1 Proposal**

A facade which changes its appearance with time

Material: Steel & Plywood

Steel is a material which when untreated will create rust when exposed to certain liquids. In cases such as the Dovecote Studio shown on the right, or more famously the Caixa Forum building in Madrid by Hertzog and Demeuron, rusting steel is used as a conscious design decision. In both cases corten steel is used, to take advantage of its quality of using rust as a protective layer to coat the material.

In other cases, as can be seen in the two next pictures, rust is not always purposeful or well accepted, instead it is unwanted, looks quite ugly and usually is treated like something that needs to be eliminated. This type of rust is caused by leakages and lack of effective protection to the steel.

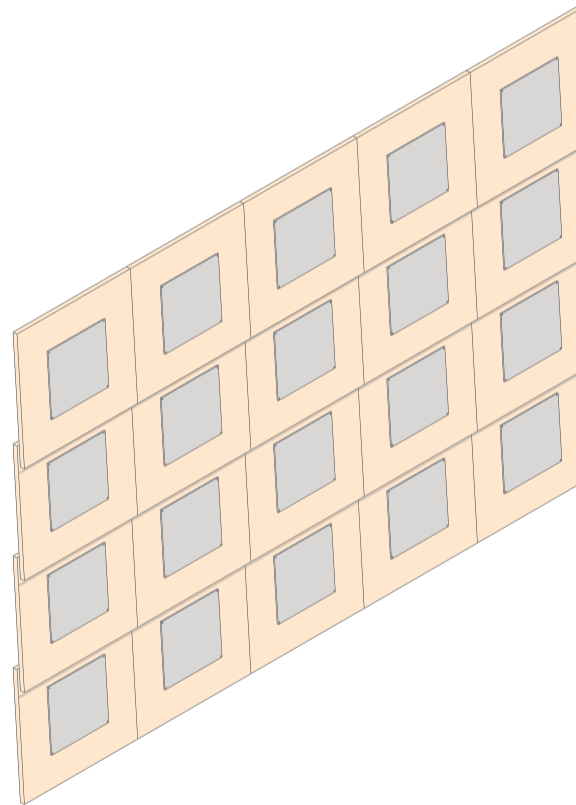


**Proposal**

My proposal is to create a facade which instead of repulsing, tuses this kind of "unwanted" leakage to its advantage

The system works with a plywood cladding facade style where the panels are overlapping to allow water and any other entity acting upon it to smoothly slide downwards. onto each plywood facade, a steel plate would be attached on top.

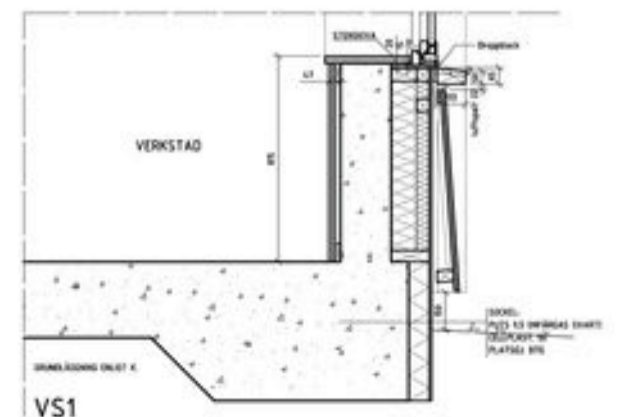
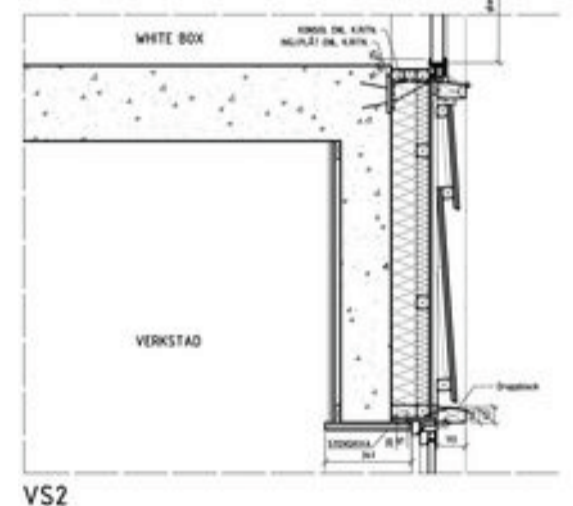
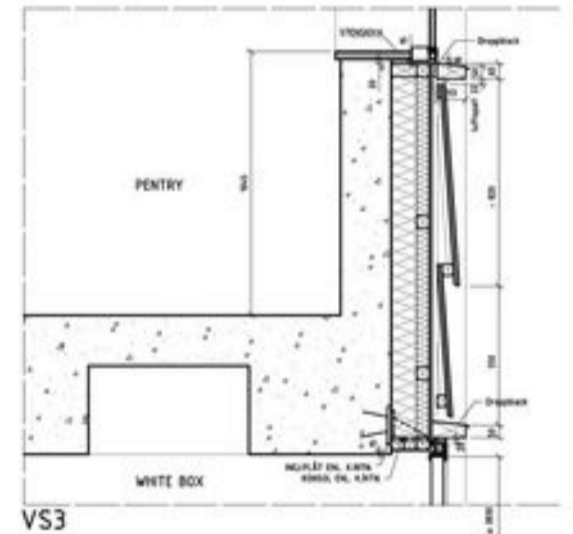
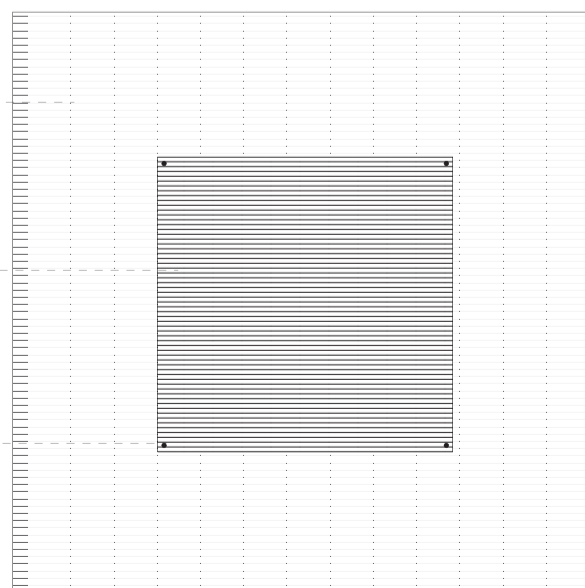
In a big city such as london where pollution is a big factor, the rain contain higher amounts of corrosive or acidic elements which during rainy periods would cause the steel to gradually rust and start dripping some of this rust onto the paneling, eventually the steel plate would be eaten away by the rust and fall off, leaving its mark behind on the plywood, that would gradually slide and expand tainting all the panels.



12mm Plywood Sheet

0.5mm Steel Sheet

Screws for conenction



Existing example of plywood paneling facade, with panels overlapping over each other.