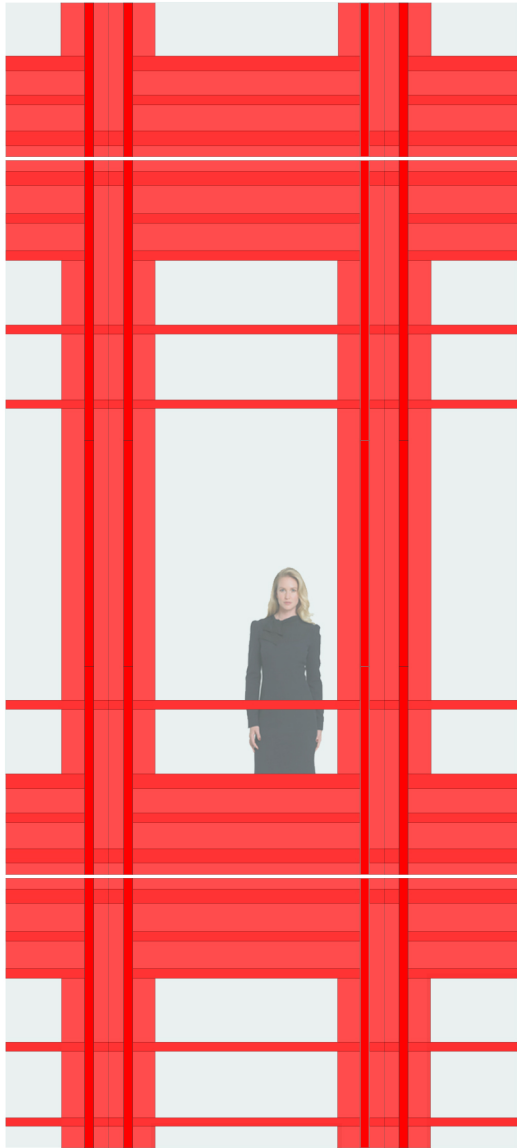
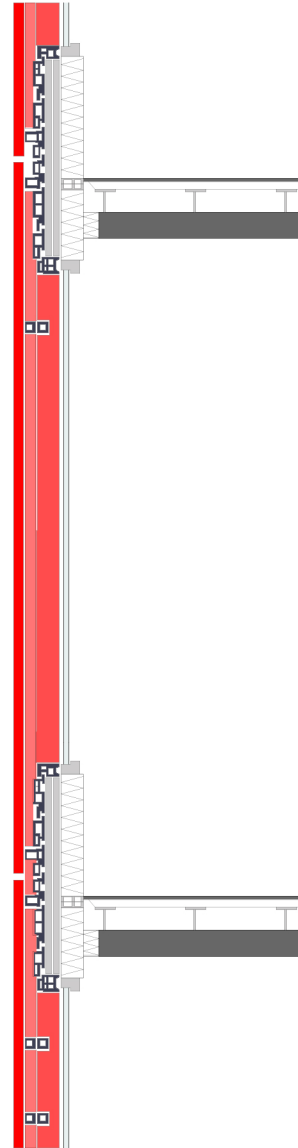


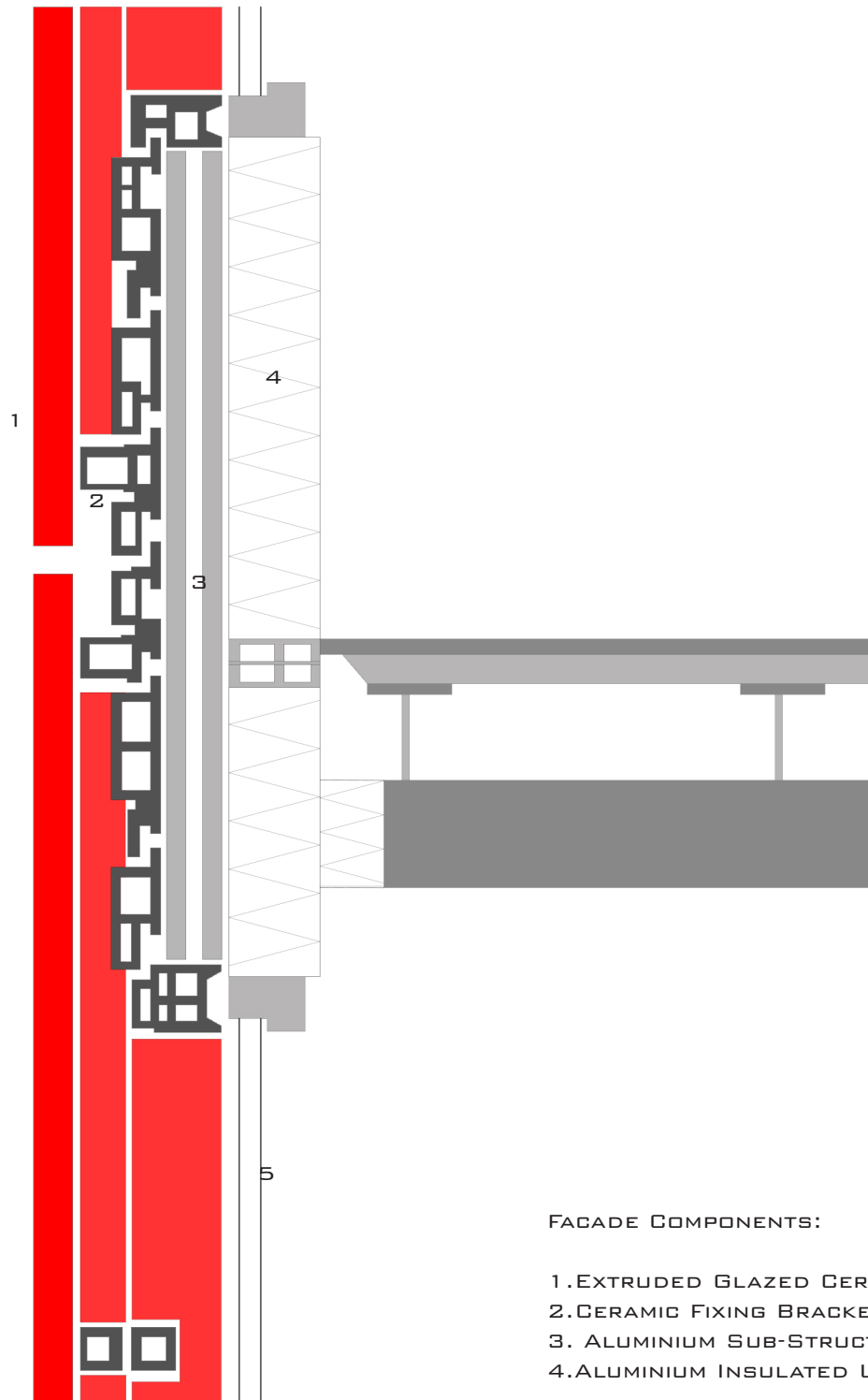
BUILDING: CENTRAL ST GILES
ARCHITECT: RENZO PIANO
LOCATION: LONDON



FACADE ELEVATION FRAGMENT



FACADE SECTION FRAGMENT



FACADE COMPONENTS:

1. EXTRUDED GLAZED CERAMIC ELEMENTS
2. CERAMIC FIXING BRACKET
3. ALUMINIUM SUB-STRUCTURE ON UNIT
4. ALUMINIUM INSULATED UNIT