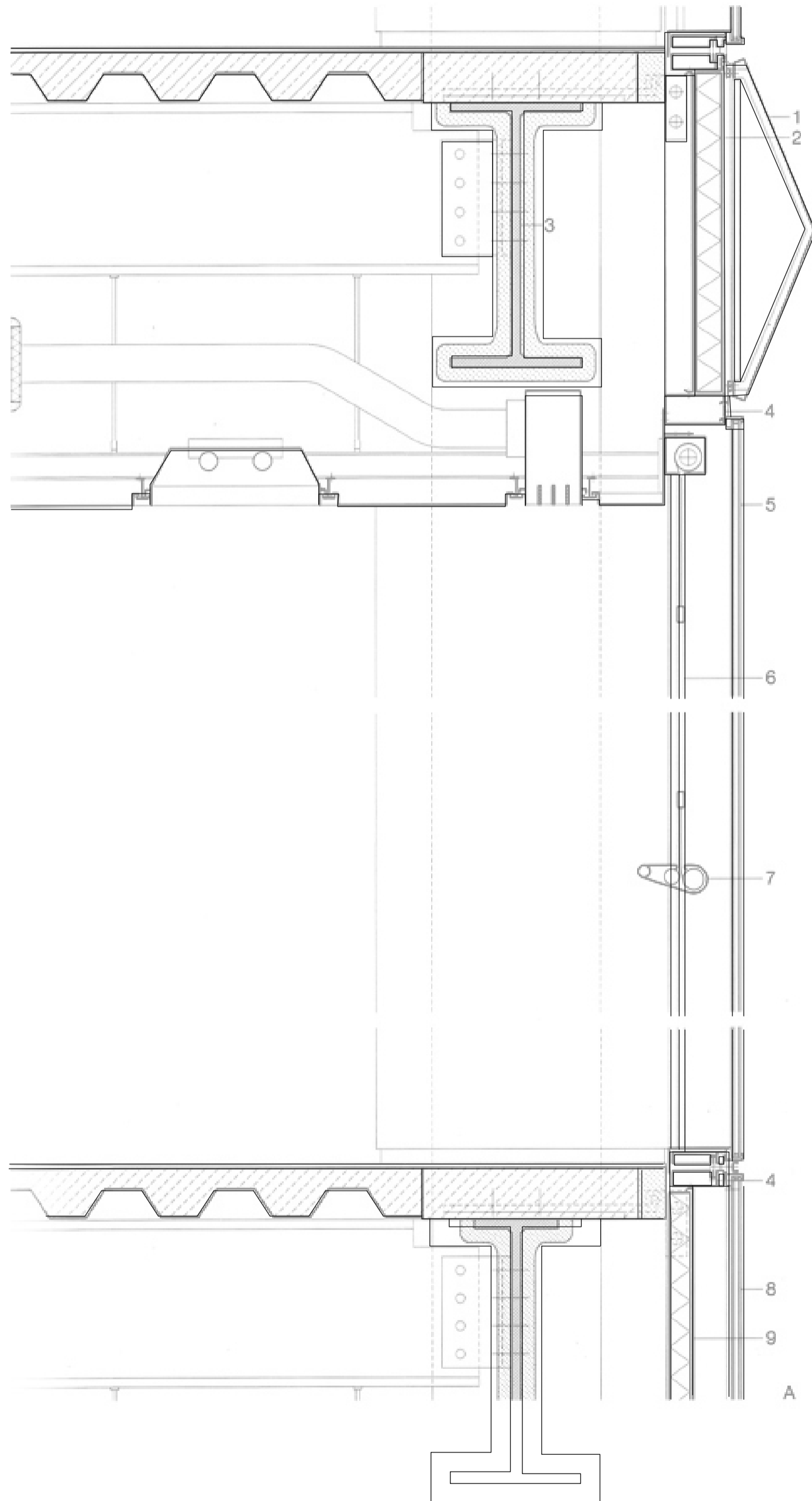


Hearst Tower

300 W 57th St, New York

Ananya Nevatia



Key

1.
3mm sheet-stainless-steel cladding masking load bearing structure, bent to shape and polished
2.
80mm panel: sheet-aluminium with thermal insulation
3.
Steel I - section edge beam 700 mm deep with fire-resisting coating
4.
Extruded aluminium facade rail
5.
Solar-control double-glazing:
6.
Internal sunscreen blind
7.
Extruded-aluminium balustrade with integral anti-glare blind
8.
Double glazing as cladding over edge of floor
9.
70mm panel at edge of floor: colour-coated sheet aluminium with thermal insulation

The climate control system incorporates "free air-cooling", using filtered outside air without temperature adjustment 75 percent of the year. Reflective pavers are utilized to increase energy efficiency by reducing solar absorption in the in roof, while low-E coated glass ushers in daylight without heat-producing radiation. Sensors are used throughout the building to conserve both electricity and water.

