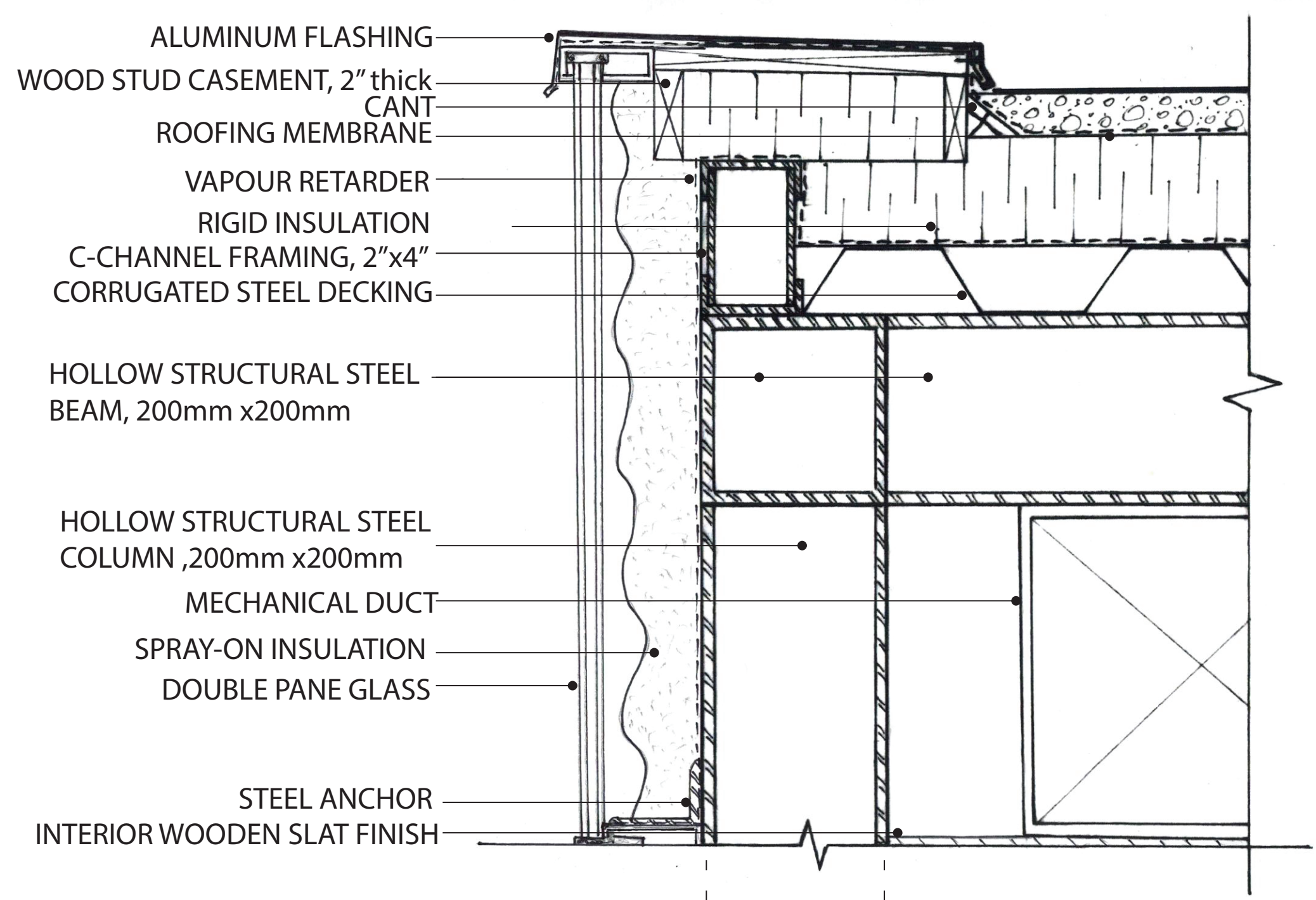




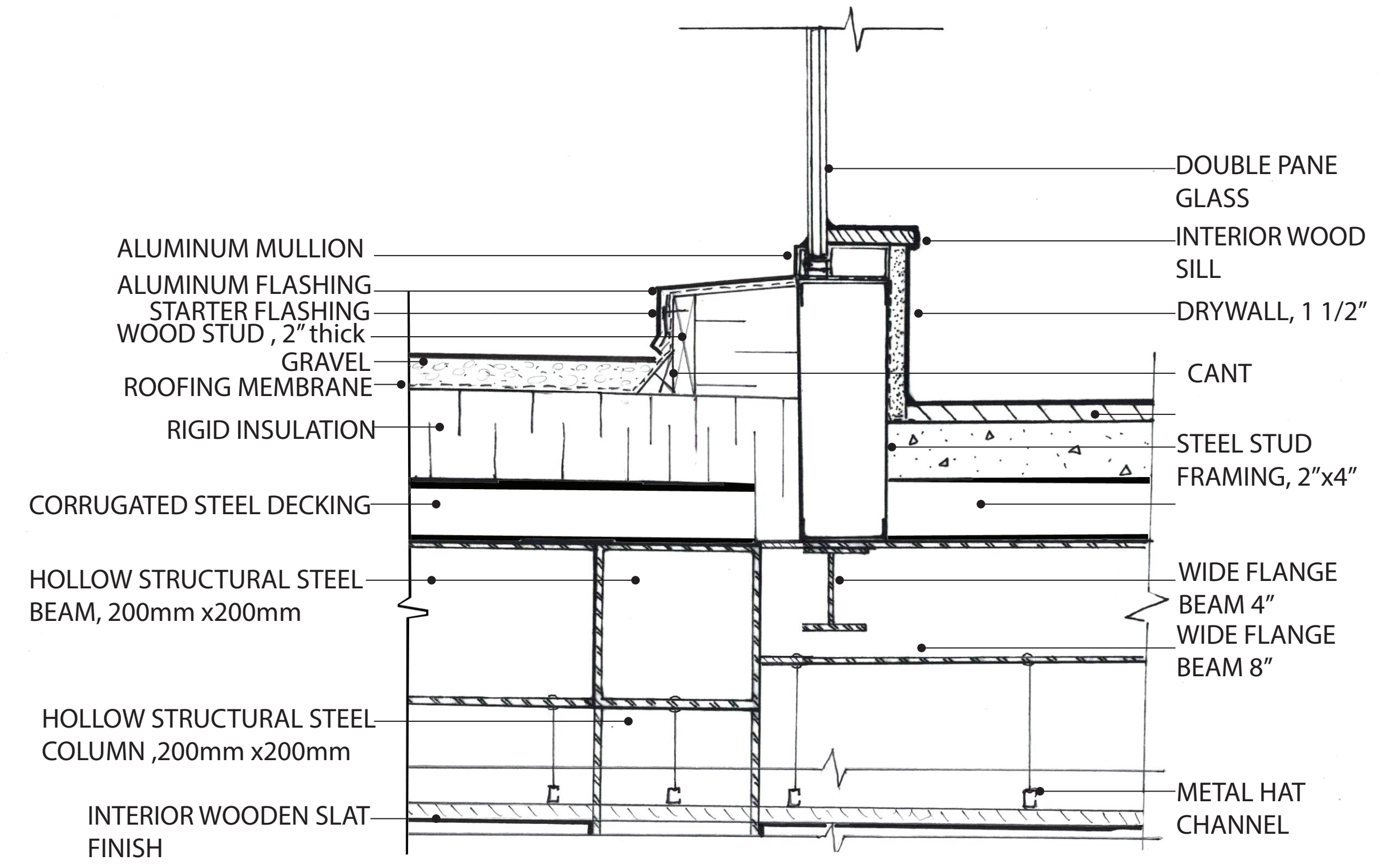
Sarah deVries  
Feb. 17, 2016

Engineering V at the University of Waterloo, a 16,200 SF building designed by Shore, Tilbe, Irwin & Partners.

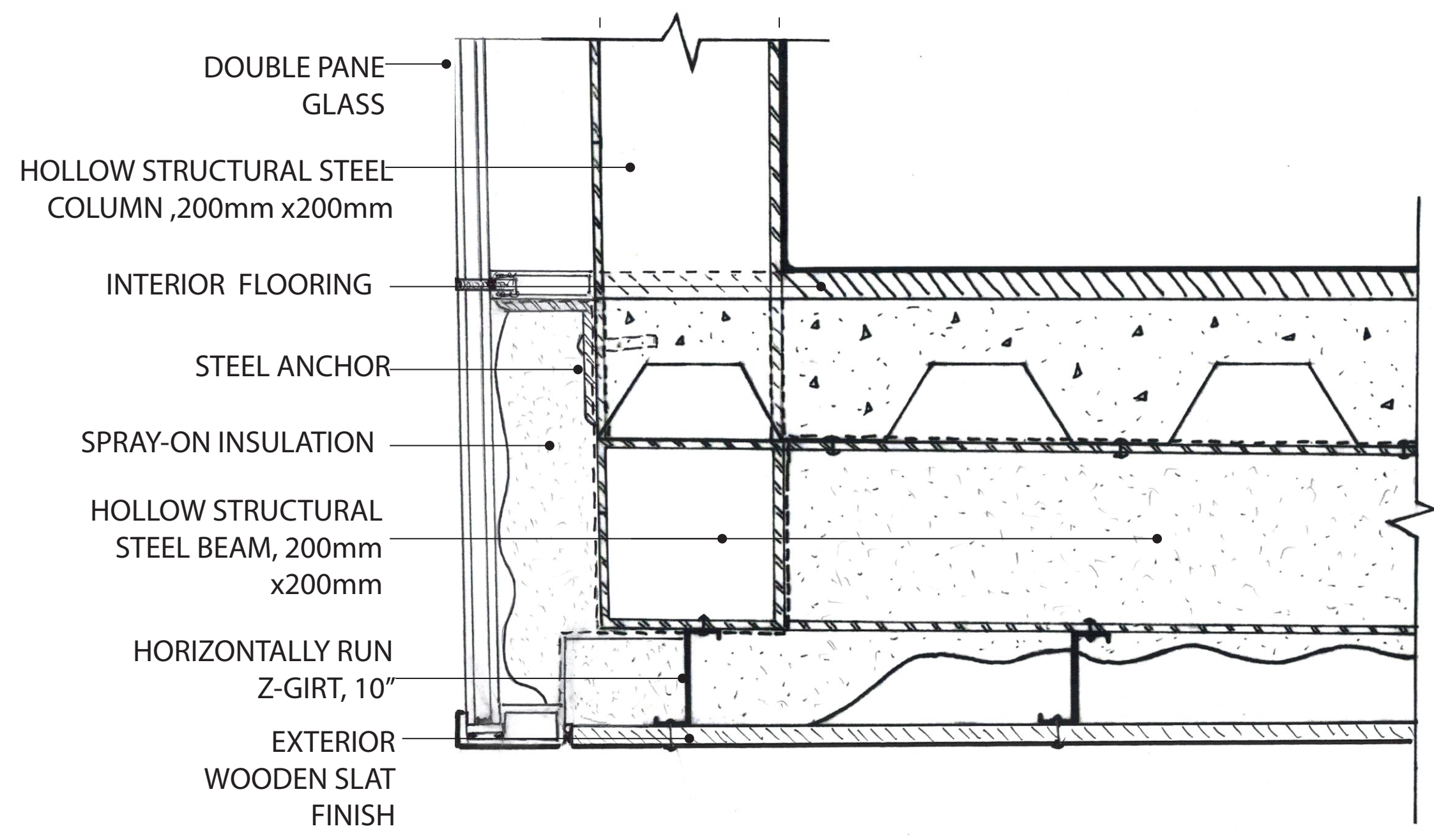
I went to visit this building this past summer and I was really interested in how they created their seamless connection between the building and the bridge. I wanted to figure out how they created this detail so I took various cuts around this connection. These connections are highlighted and numbered matching the picture to the facade detail. I took into account the climate of this building and how they would have had to insulate and ventilate this bridge being a very cold climate during the winter but also very warm during the summer.



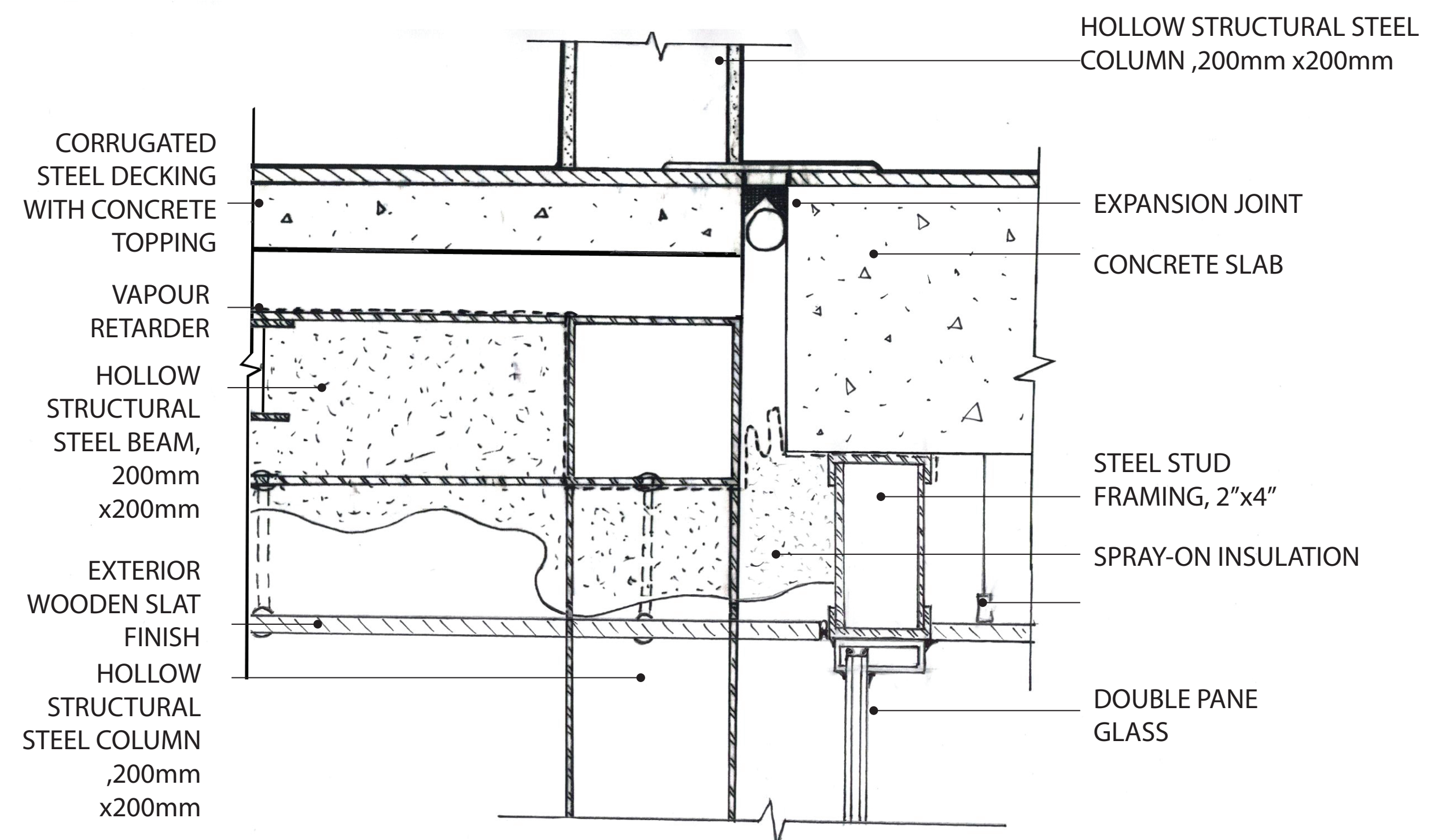
**1** SECTION DETAIL 1: BRIDGE PARAPET SCALE 1:5



**2** SECTION DETAIL 2: WINDOW TO BRIDGE PARAPET SCALE 1:5



**3** SECTION DETAIL 3: BRIDGE SOFFIT SCALE 1:5



**4** SECTION DETAIL 4: CONCRETE TO STEEL EXPANSION JOINT SCALE 1:5