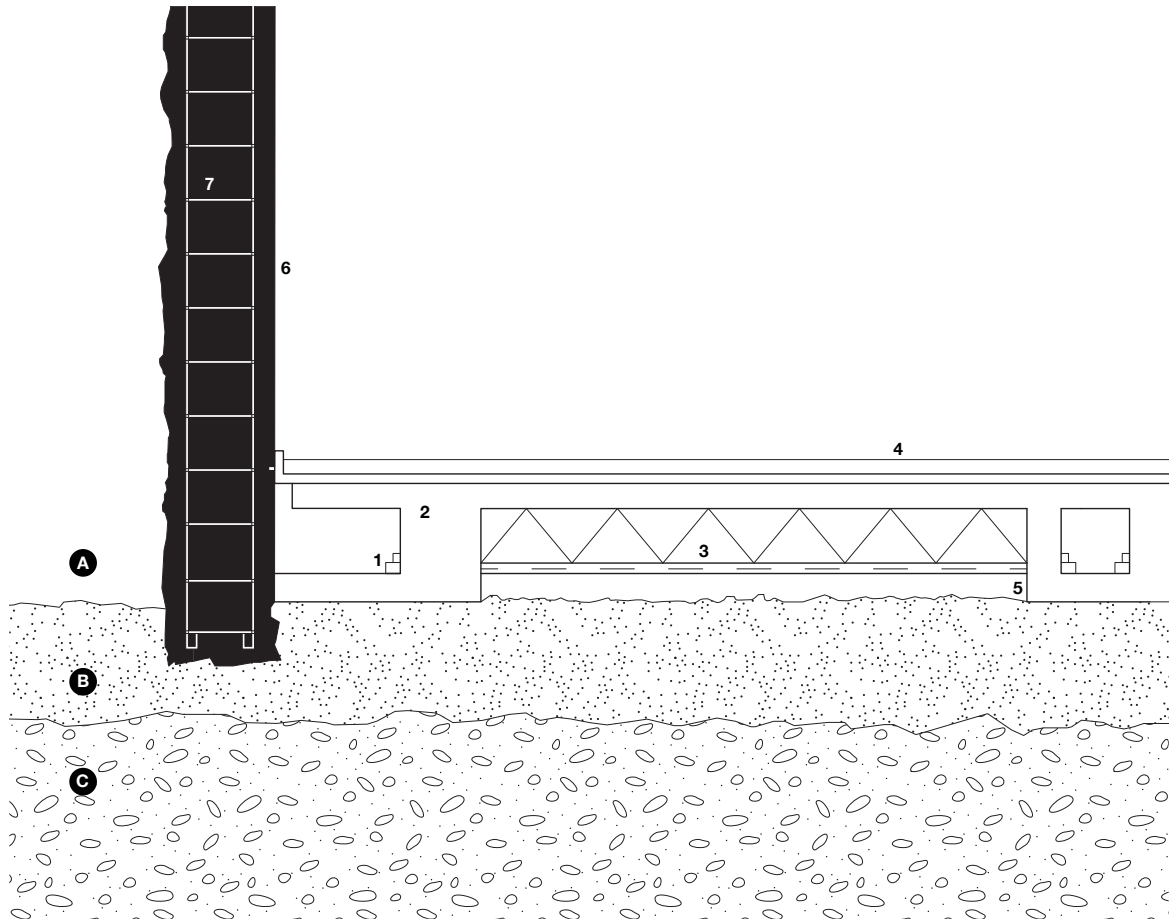


Restoration of Castelgranda, Bellinrona,  
1981,  
Aurelio Galfetti



- A - Rock Stone
- B - Level of broken bedrock
- C - Level of hard unbroken bedrock

- 1 - Drainage Channel to sump & pumps
- 2 - Cement Base
- 3 - Reinforced concrete slab
- 4 - Broken stone bed
- 5 - Reinforced concrete base
- 6 - Metal Reinforcement
- 7 - Betone Wall (Poured)

