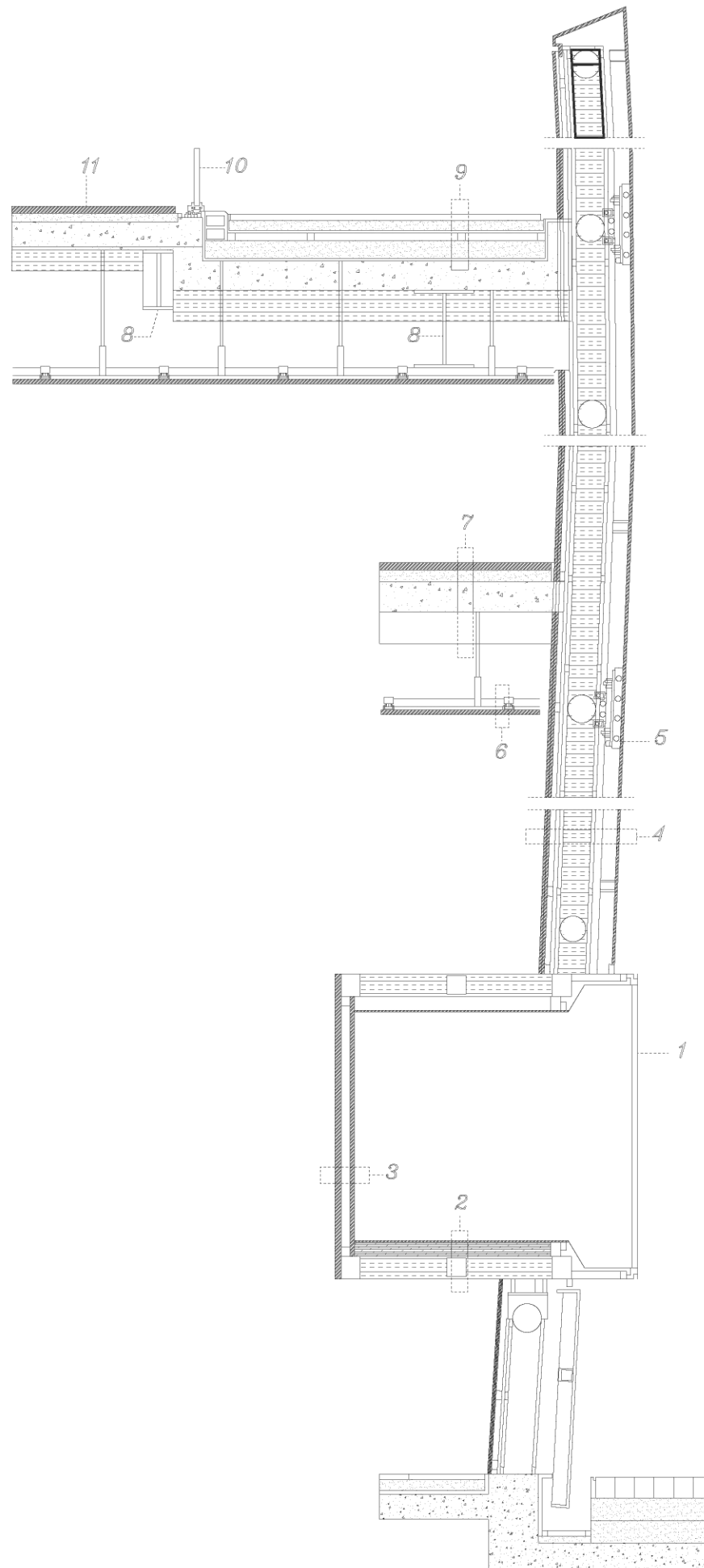


HOUSE OF DIOR SEOUL
SOUTH KOREA
JAE WHAN KIM





- 1- DISPLAY WINDOW WITH ALUMINIUM FRAME AND 1/4 - 3/4 - 1/4 + 5/16" (6/18/6+8 MM) LAMINATED GLASS GLAZING
- 2- 3/8" (10 MM) MDF FLOORING. 2 7/8" (75 MM) H TIMBER BEAM (PARALLEL TO PLANE OF SECTION), FRAME OF 4 X 4" (100X100 MM) STEEL BOX PROFILES SANDWICHING INSULATION, 1 X 1 1/4" (25X355 MM) STEEL I-PROFILES, SHEET ALUMINIUM FINISH
- 3- POLISHED SHEET STEEL INTERIOR FINISH, 1/2" (14 MM) MDF PANEL. FRAME OF 2 X 2" (50X50 MM) STEEL BOX PROFILES, DOUBLE 1/2" (12.5 MM) GYPSUM BOARD
- 4- EASTERN FACADE COMPRISING 1/2" (12 MM) GFRP CLADDING PANELS, SUPPORTING STRUCTURE OF 2 3/4" (70 MM) ALUMINIUM PROFILES SANDWICHING INSULATION. FRAME OF 3/4 X 1 5/8" (20X40 MM) ALUMINIUM BOX PROFILES, 0 5 1/2" (140 MM) STEEL PIPE PROFILES WITH 2 3/4 + 2 3/4" (70+70 MM) INSULATION, FRAME OF 3/4 X 1 5/8" (20X40 MM) ALUMINIUM BOX PROFILES, SHEET STEEL INSULATION, WATERPROOFING MEMBRANE, FRAME OF 1 1/4 X 2" (30X50 MM) ALUMINIUM BOX PROFILES, DOUBLE 3/8" (10 MM) MDF PANEL WITH DECORATIVE PLASTER FINISH
- 5- STEEL BRACKET ANCHORING FACADE TO PIPE PROFILES
- 6- FALSE CEILING COMPRISING REFLECTIVE ALUMINIUM PANELS. 3/8" (10 MM), ALUMINIUM HONEYCOMB PANEL, 3/8" (10 MM), MDF PANEL. 1 X 2" (25X50 MM), - C-PROFILES ON STEEL BARS. STEEL TIE RODS FASTENED TO SLAB
- 7- 1 1/4" (30 MM) FLOORBOARDS, GLUE LAYER. 2 3/8" (60 MM) SCREED, 10 5/8" (270 MM) REINFORCED CONCRETE SLAB. 6 1/4" (160 MM) RIGID INSULATION
- 8- STRUCTURAL STEEL I-BEAMS IN DIFFERENT SIZES
- 9- BALCONY FLOOR COMPRISING 1 1/4" (30 MM) STONE FLAGS. 2" (50 MM) SCREED, RUBBER MATTING, FRAME OF 1 5/8 X 1 5/8" (40X40 MM) STEEL BOX PROFILES, 3 1/2" (90 MM) SCREED. WATERPROOFING MEMBRANE, REINFORCED CONCRETE SLAB
- 10- FULL-HEIGHT ALUMINIUM SLIDING DOOR WITH 1/4 - 3/4 - 1/4" (6/20/6 MM) GLAZING
- 11- 1 1/4" (30 MM) PALADIANA-STYLE FLOORING ON 1 5/8" (40 MM) SCREED

