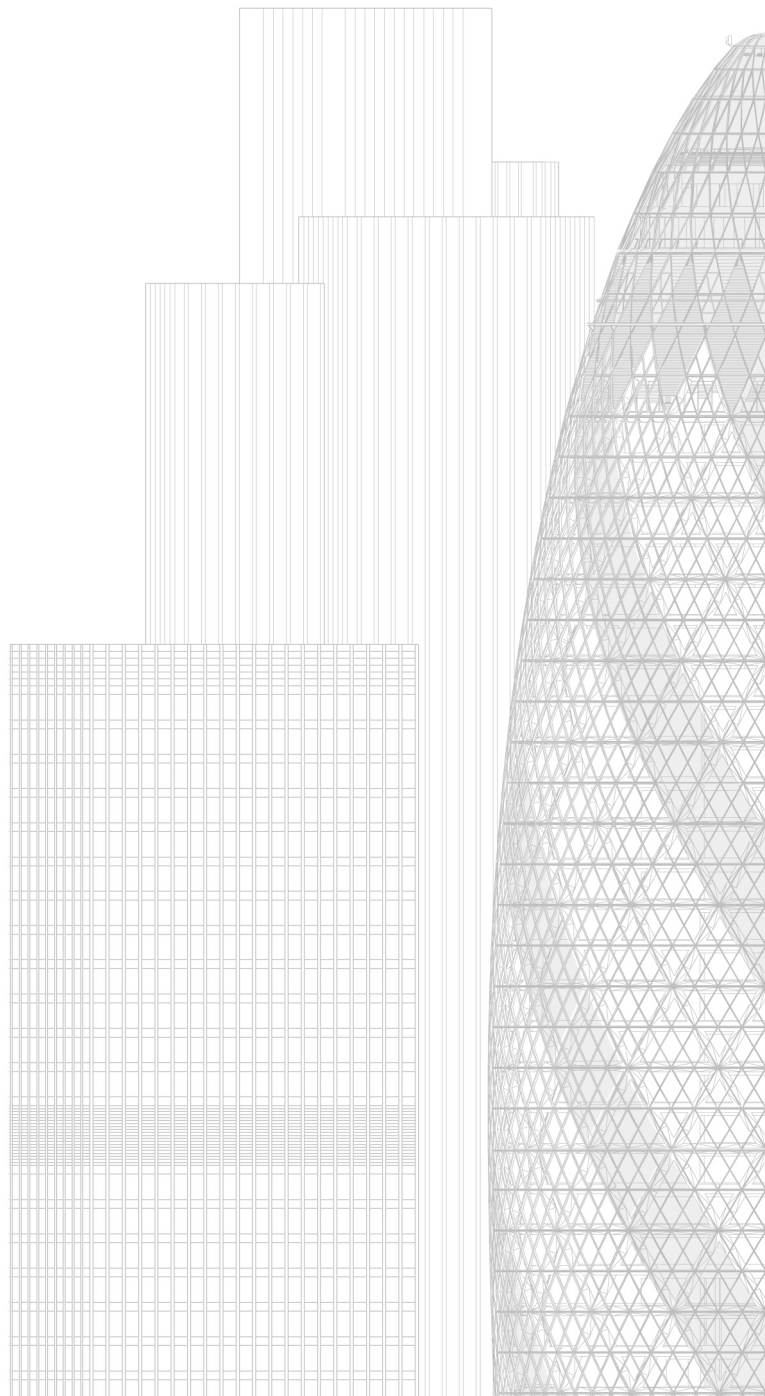


30 St Mary Axe  
'The Gherkin'

AA Second Year  
Technical Studies  
Materials

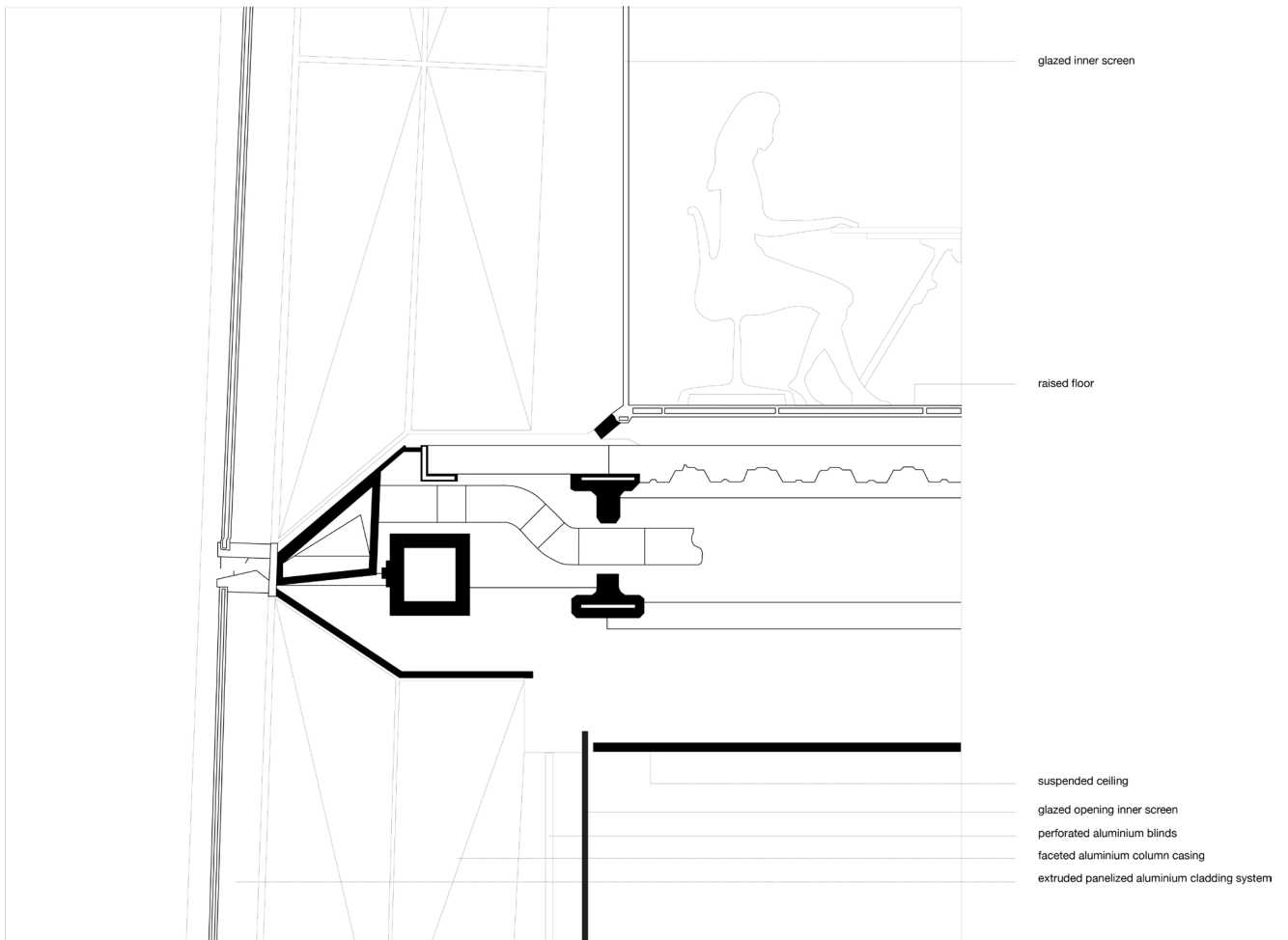
Karim Fouad





#### Facade Material *Glass*

The building's main feature is that it uses energy-saving methods which allow it to use half the power that a similar tower would typically consume. Gaps in each floor create six shafts that serve as a natural ventilation system for the entire building even though required firebreaks on every sixth floor interrupt the chimney. The shafts create a giant double glazing effect; air is sandwiched between two layers of glazing and insulates the office space inside.



cross section  
1:50