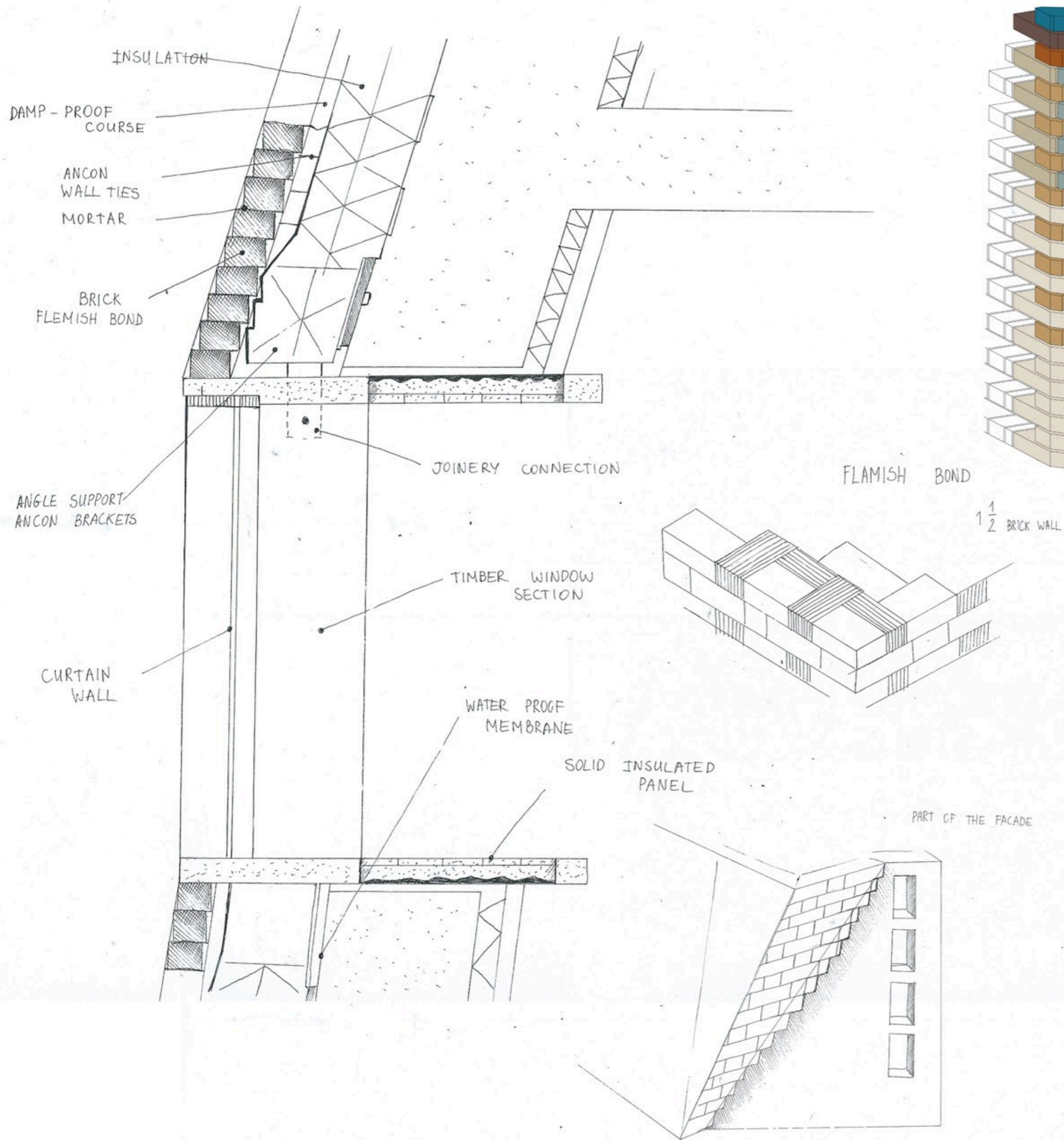


LSE Saw Hock Student Centre



The folded, chamfered, canted and faceted façade operates with respect to the Rights of Light Envelope and is tailored in response to specific lines of sight along approaching vistas and from street corner perspectives. The surface of the brick skin is cut out along fold lines to form large areas of transparent glazing framing views in and out from street to room. Like a Japanese puzzle, our design is carefully assembled to make one coherent volume from a complex set of interdependent component parts.

The faceted facade of the building is composed of both solid and perforated brick areas and glazed screens. The perforated planes are constructed from a single leaf of brickwork with spaces in the flemish bond pattern to allow light to both infiltrate the interior spaces and filtrate out at night to create a pattern effect. The openwork brickwork is constructed in front of glazed screens that seal the building and incorporate opening sections to naturally ventilate the building. The extent of perforation has been developed to maximise daylight into the building. The perforated masonry is supported by a series of posts which connect back to the primary concrete frame. Solid brickwork in a flemish bond pattern blends into the perforated areas where openings / daylight is required.

