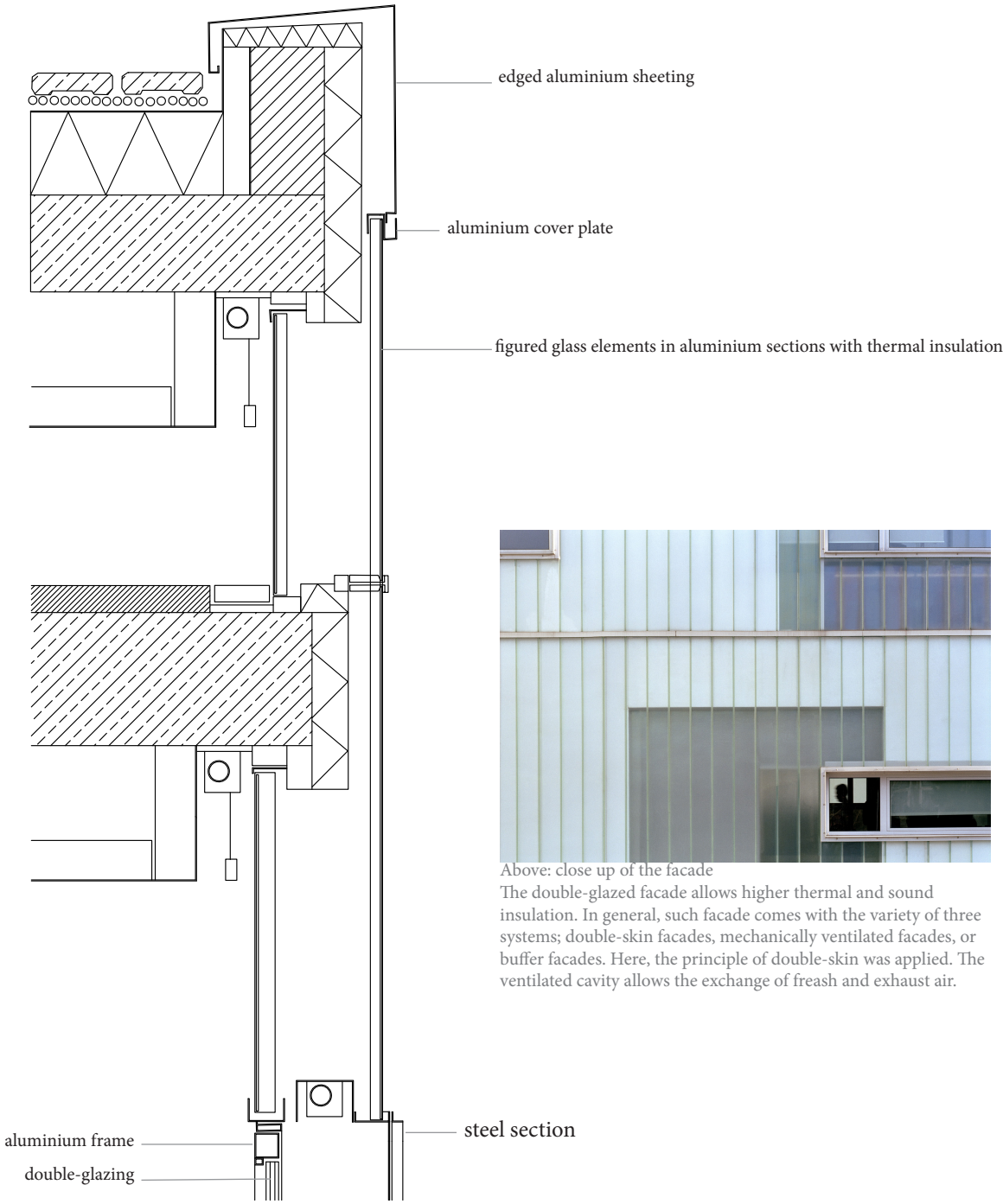


TS2 EXERCISE 1 FACADE STUDY - MINJUNG CHO  
 Police Station, Boxtel (NL) 1997, Wiel Arets



Above: close up of the facade  
 The double-glazed facade allows higher thermal and sound insulation. In general, such facade comes with the variety of three systems; double-skin facades, mechanically ventilated facades, or buffer facades. Here, the principle of double-skin was applied. The ventilated cavity allows the exchange of fresh and exhaust air.