

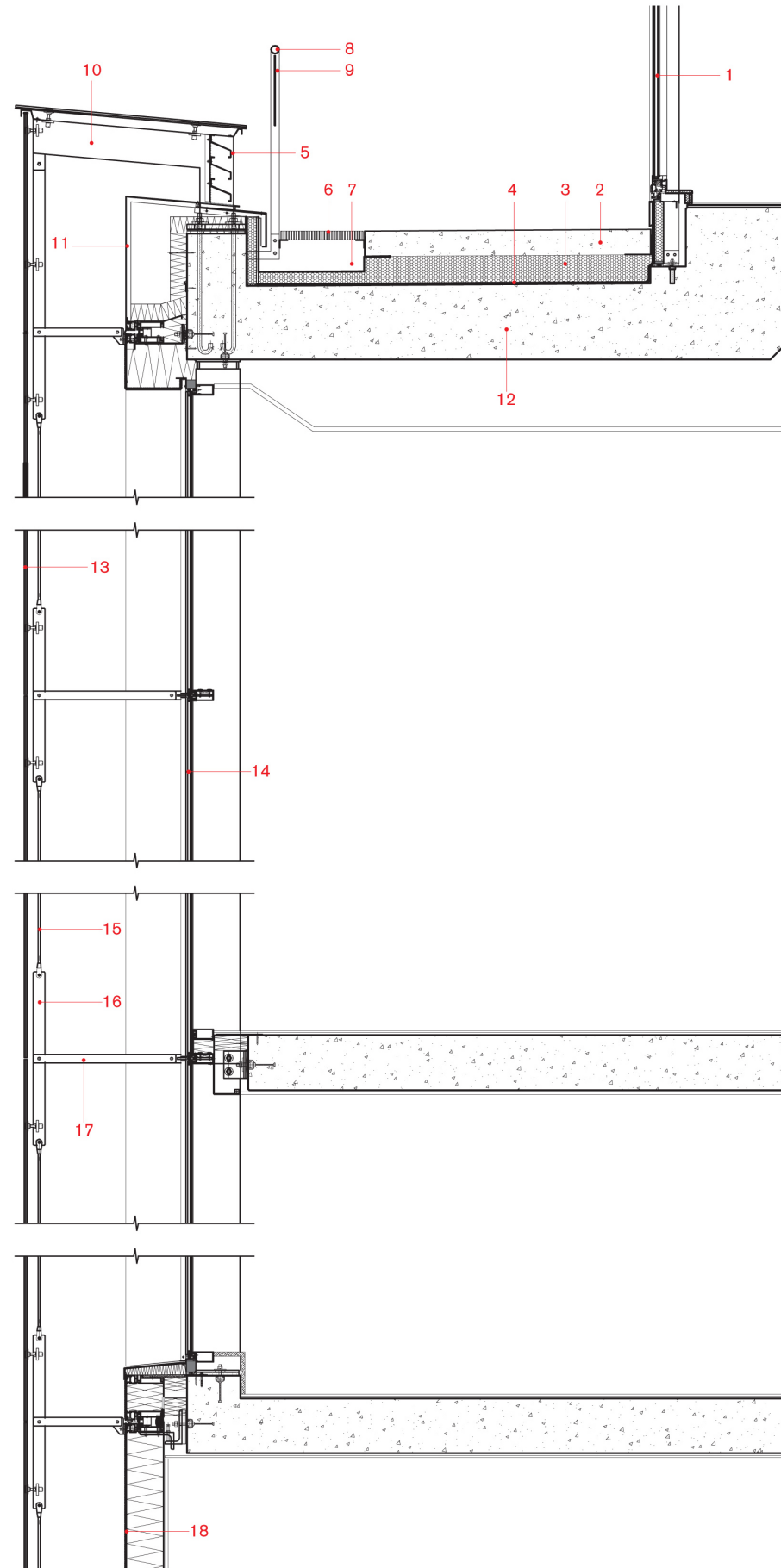
# Katayoun NekourouyMotlagh

TS Material Exercise 1

W hotel- London, UK

The facade to the hotel level is a twin wall construction, with an outer glass veil hung from the parapet at eighth floor level where the apartment level begin. The inner skin is clad with solid unitised panels with integrated punched windows. The glass veil has a ceramic frit artwork of varying patterns and densities applied to its inner face, which disguises the typical monotony of hotel elevations. The unitised panels are typically 3m high and 4.2 m long to correspond with the guest room module, and are finished with polyster powder- coated textured aluminium panel, coloured to reflect the portland stone in the area.

1. Aluminium curtain wall to apartments
2. Self finished concrete deck
3. Rigid insulation
4. Hot applied roofing
5. Aluminium louvres
6. Stainless steel grill
7. Perimeter gutter
8. Stainless steel rail
9. Glass balustrade infill
10. Stainless steel gallow bracket
11. Textured aluminium cladding panel
12. Concrete structural frame
13. Laminated glass veil
14. Aluminium curtain wall system
15. Stainless steel veil hanging rods
16. Steel suspension baracket
17. Steel resistant baracket
18. Unitised cladding panel with textured aluminium facing panel



South View

