

Architectural Association School of Architecture  
Second Year Technical Studies

**Facade Analysis**

Allianz Headquarters, Wallisellen, Switzerland  
by Wiel Arets Architects

Xuecheng Wang

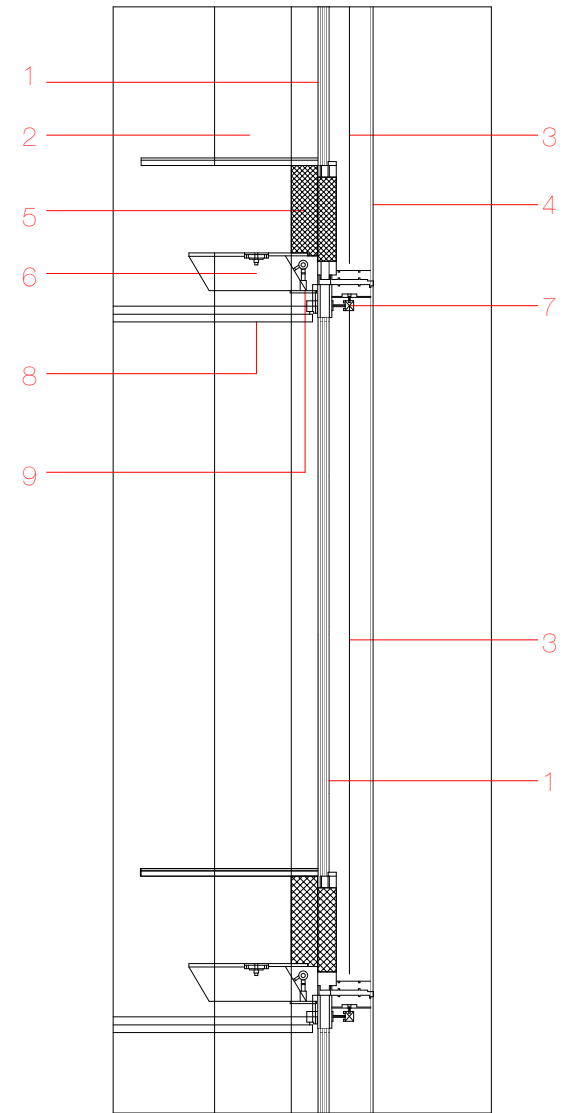




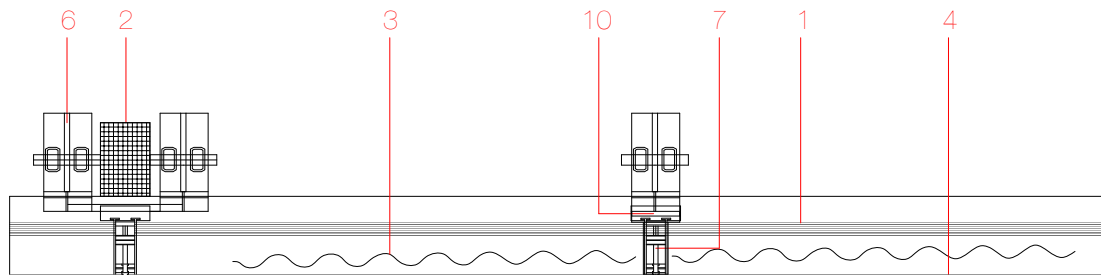
- 1 - triple **glazing** with double layer laminated on the inside
- 2 - **concrete** column, 400-500 mm
- 3 - **polyester** curtain, metallic finish, with UV
- 4 - laminated **glass**
- 5 - thermal insulation: **mineral wool** 130+90
- 6 - 15mm galvanised **steel** profile
- 7 - curtain motor
- 8 - technical **metal** false ceiling panels (1.35m \* 1.35m) with integrated heating and cooling elements
- 9 - air duct
- 10 - **aluminium** profile

The office building's prefabricated glass grids might look similar to those American contemporaries; one might also draw the false similarities between Mies van der Rohe's Barcelona Pavilion, but in fact it is not. The facade of the building contains multiple layers so that its 83 cm thickness is even greater than that of the Economist Building in London (66 cm).

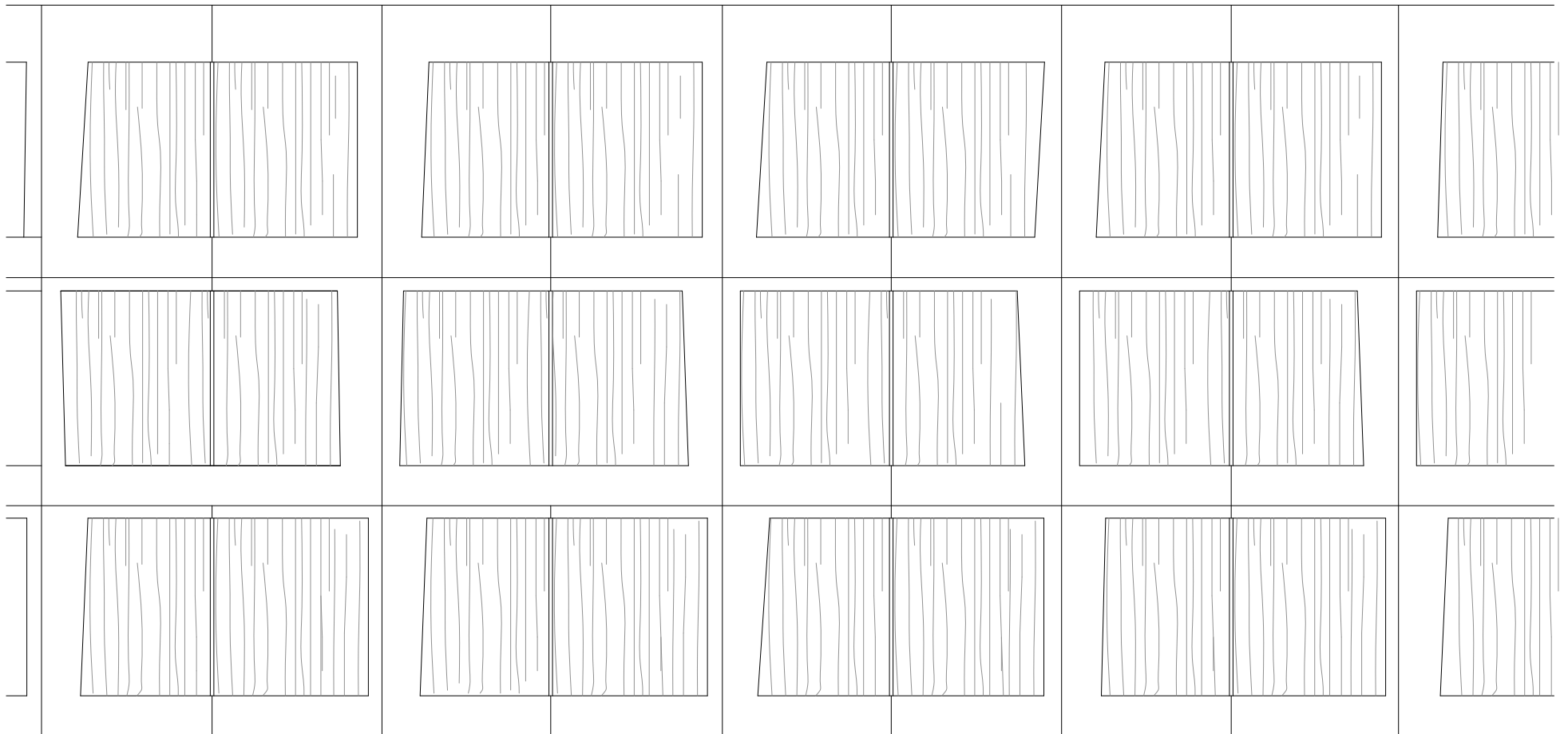
The beauty of the facade not only lies within the visual effect it gives to a person passing by, but also in its construction system hidden in the thick facade. Each module contains an electronically controlled curtain measuring 2.70 meters in width and 3.70 to 8.00 meters in height. The cavity in which the curtain is placed in is 30 cm in thickness, providing extra insulation.



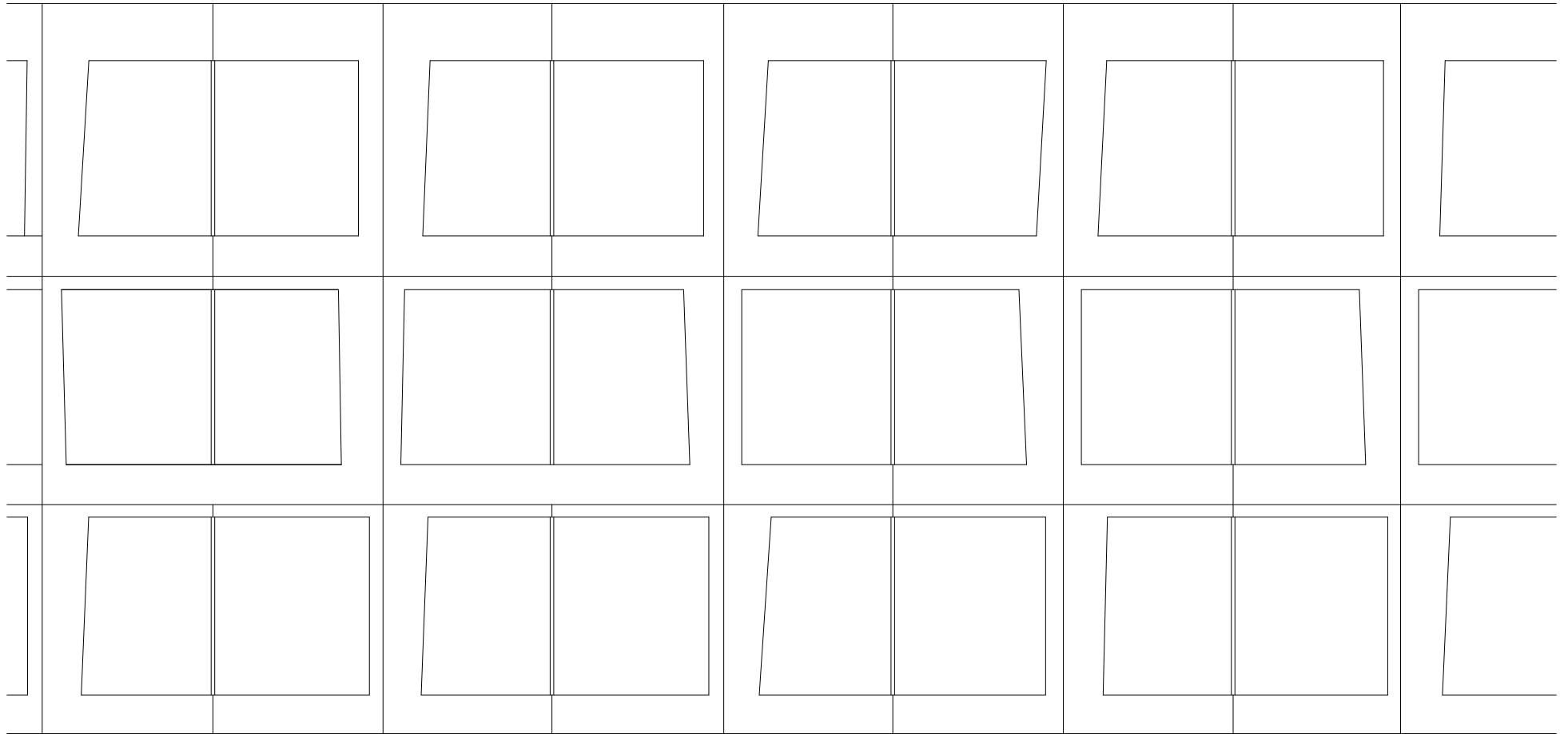
1: 40 facade section



1: 40 facade plan



1:100 facade (part) when curtains are all closed



1:100 facade (part) when curtains are all open