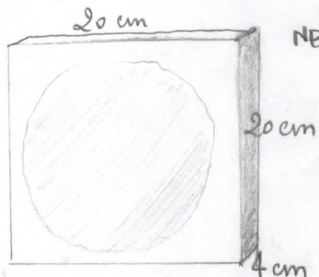
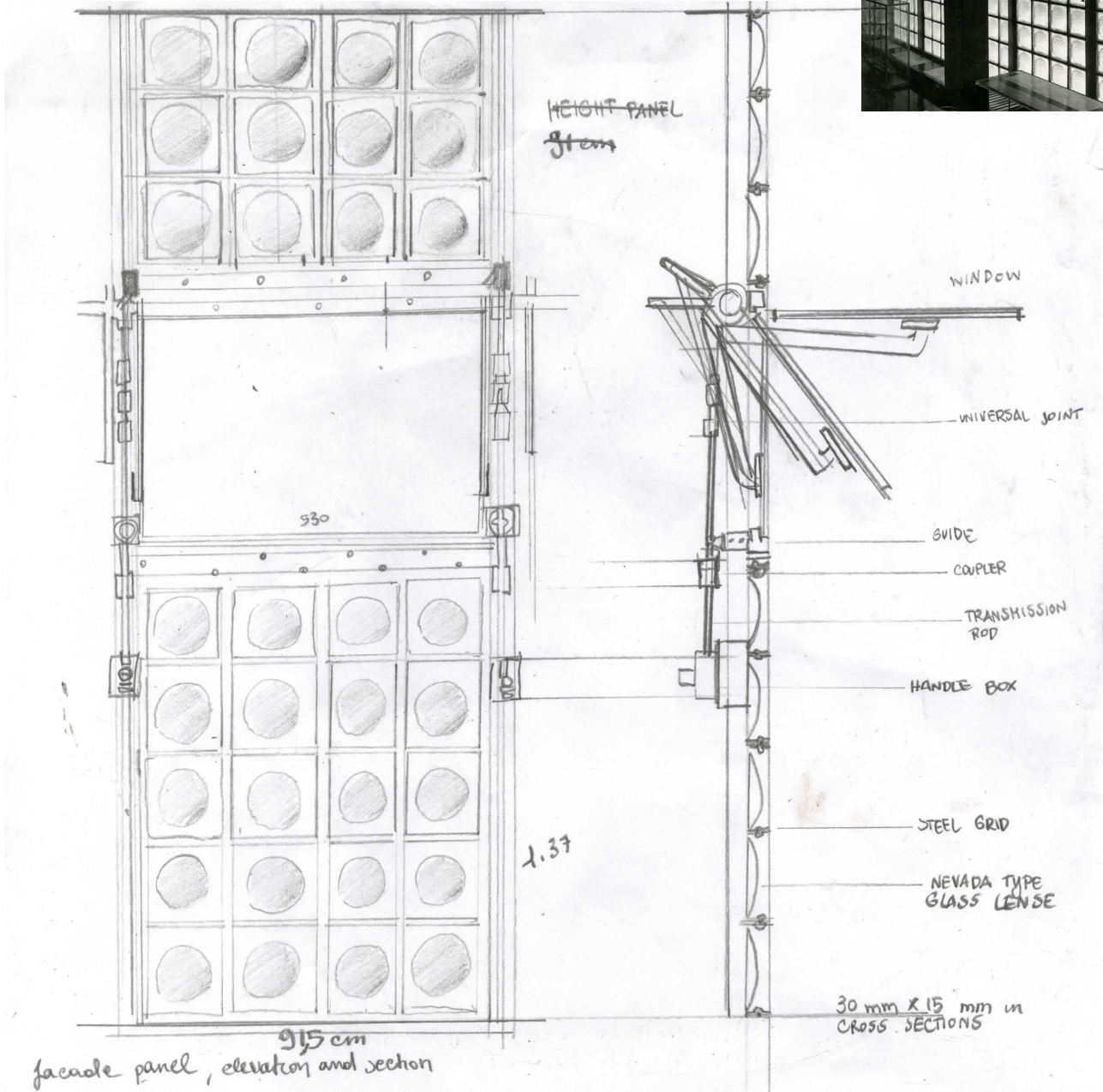


Maison De Verre (1928-1930), Pierre Chareau, Paris, France

Materials: Nevada glass lens mounted on frame (steel)



NEVADA TYPE GLASS LENS (INDUSTRIALLY MASS-PRODUCED)

THICKNESS : 4 cm  
 DENSITY : 2.4 Kg/m<sup>3</sup> 1.4  
 THERMAL QUALITY : 28 N/m<sup>2</sup>K (value of a double glazed windows materials)

STRENGTH: glass is not like other materials used in buildings, it is fairly rigid providing a lot of strength but can be brittle as well. Rigid, not flexible. The relationship between stress and strain is linear. INABILITY TO FLEX

These panels are dry assembled from the exterior. The panels are composed of a frame into which is fitted either a fixed glass plate.