



# Wooden Brick

Technical Studies Materials

One to One

Nina Tabink, Carolina Bartram and George Scott

Yoav Caspi

Second Year 2015-16

Architectural Association School of Architecture

## Brief

---

### Most Easily Deconstructable

You must construct a piece of a facade min 30cm x 30cm for a temporary touring exhibition. The pieces need to be easy to assemble, demountable and easily transportable. Think of the key issues and what is the most suitable material and form.



## Facade Properties

---

To understand what kind of a facade system I would like to create I defined more precisely the properties I was interested in investigating:

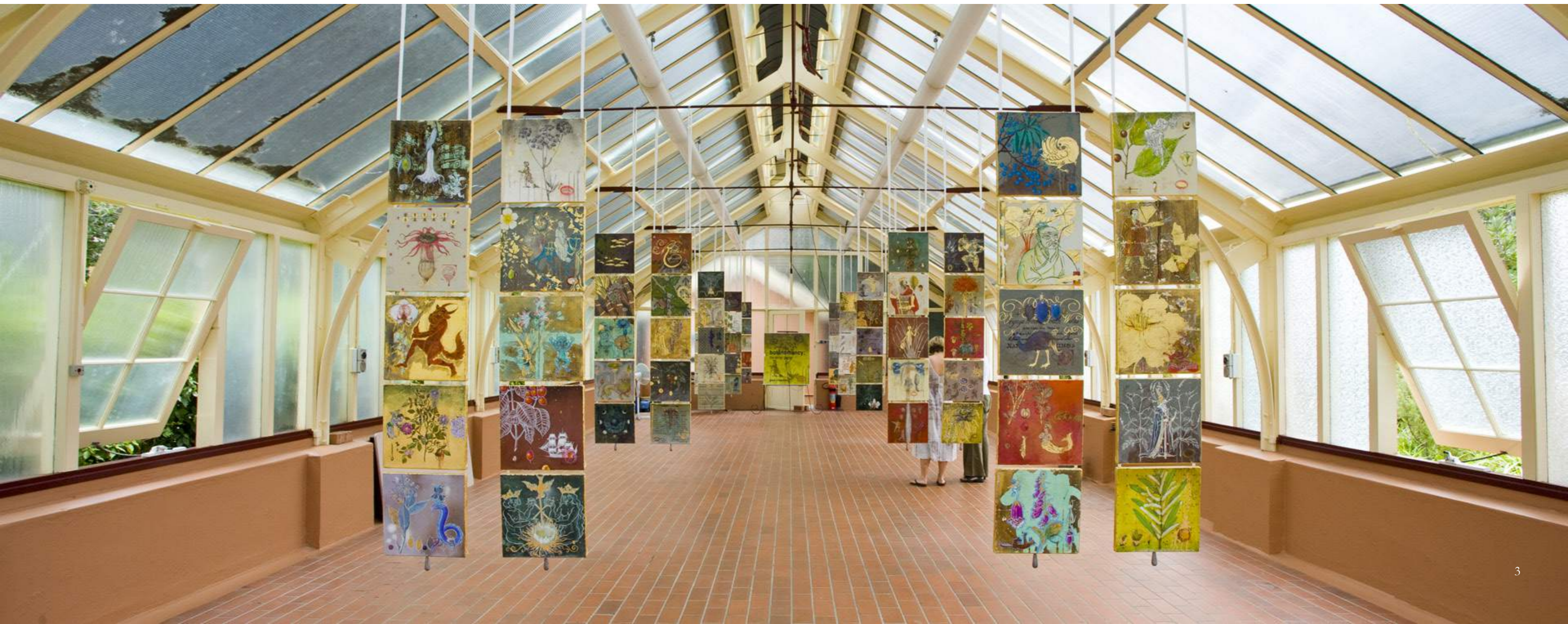
Easily constructed and assembled – as required by the brief.

Easily transported – as required by the brief.

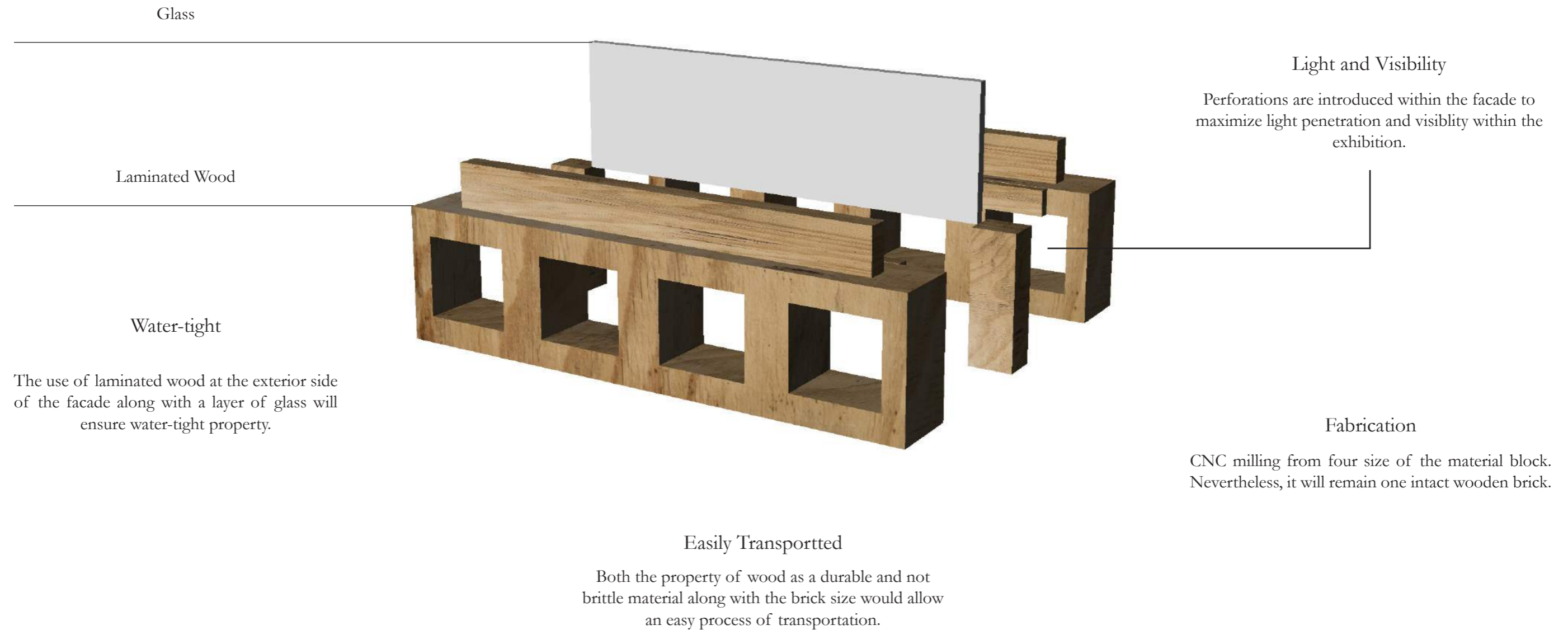
Visibility – the moving exhibition will require light to allow visitors to behold upon artworks with natural light.

Stability and Connectivity to the ground – proving as an actual facade.

Water tight – proving as an actual face.



## First Iteration



Easily Constructed and Assembled on Site



Facade



The size of the wooden brick would allow an easy assembly technique on site. In addition, the simple joinery would allow quick joinery. Finally, the use of wood which is not brittle can guarantee a safe assembly.

## Conclusions

---

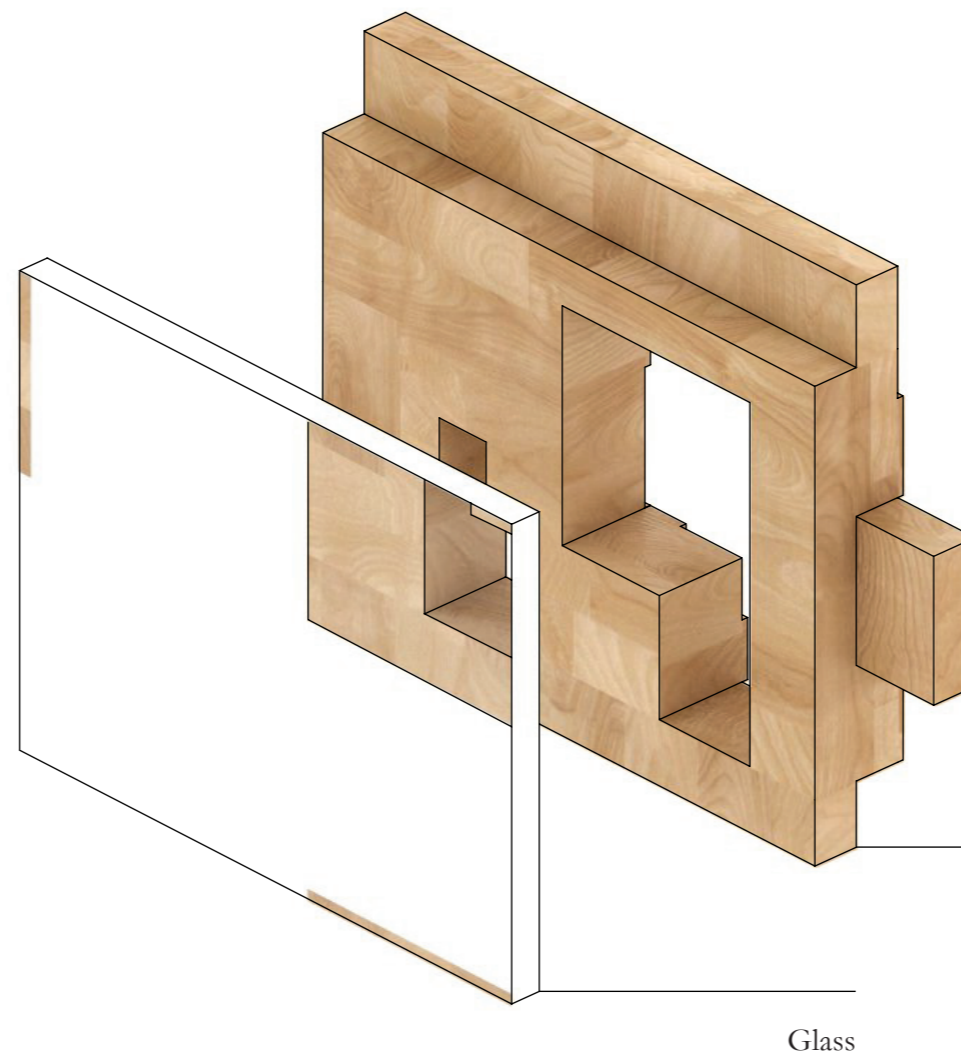
The first iteration allowed me to draw conclusions and focus on three that I would like to solve.



## Interior

---

The wooden brick will be treated differently from the interior and the exterior.



Watertightness - Laminated Wood.

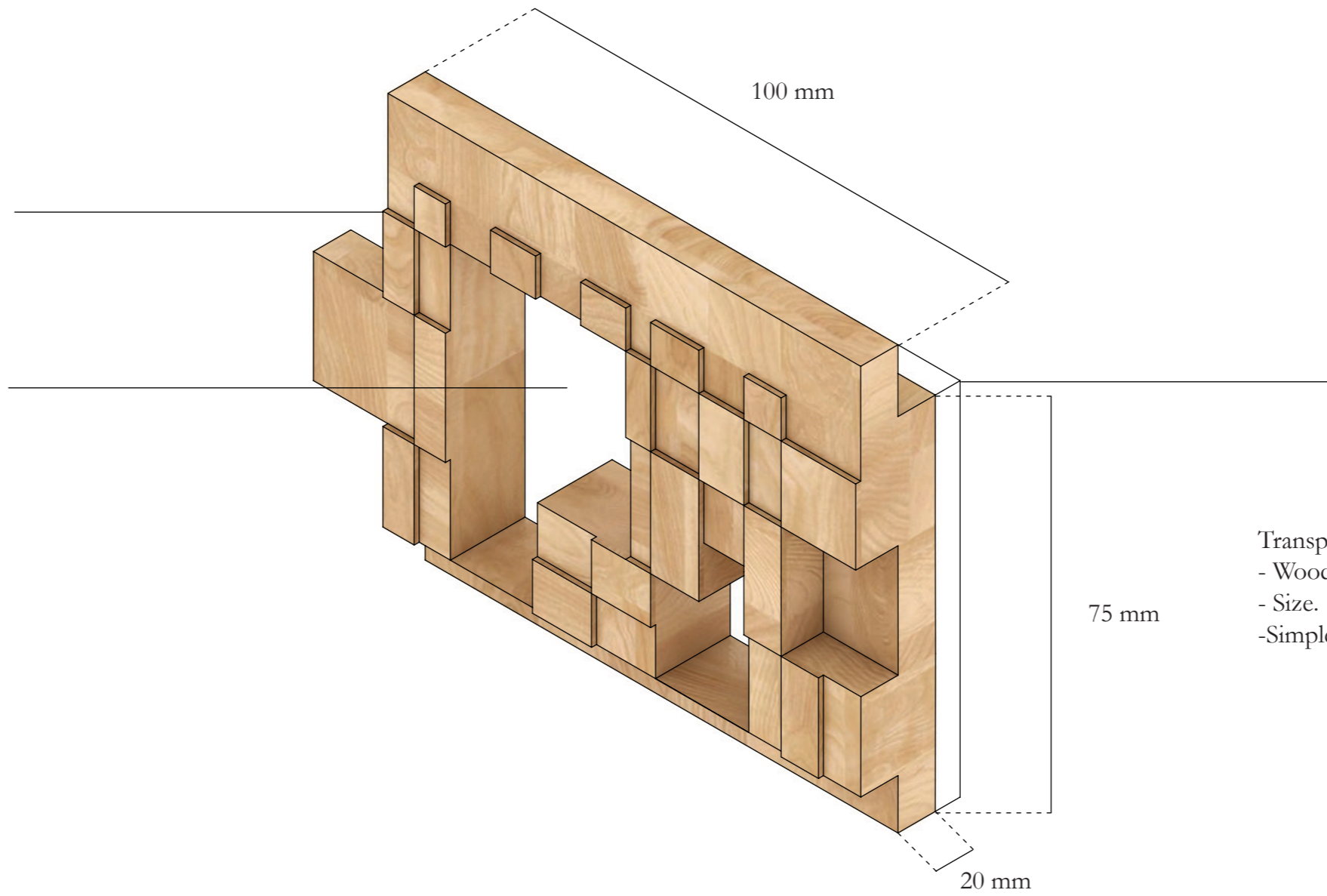
Wood: - Good Structural Properties.  
- Not Brittle.  
- Low Embodied/Carbon.  
- Good Thermal Properties.

Exterior

Acoustic Properties -  
Increased Surface Area  
and Texture.

Visibility - Perforations

Support  
Small Scaled Splinth Supports



Watertightness - Glass

Transportation & Construction  
- Wood.  
- Size.  
- Simple Joinery.

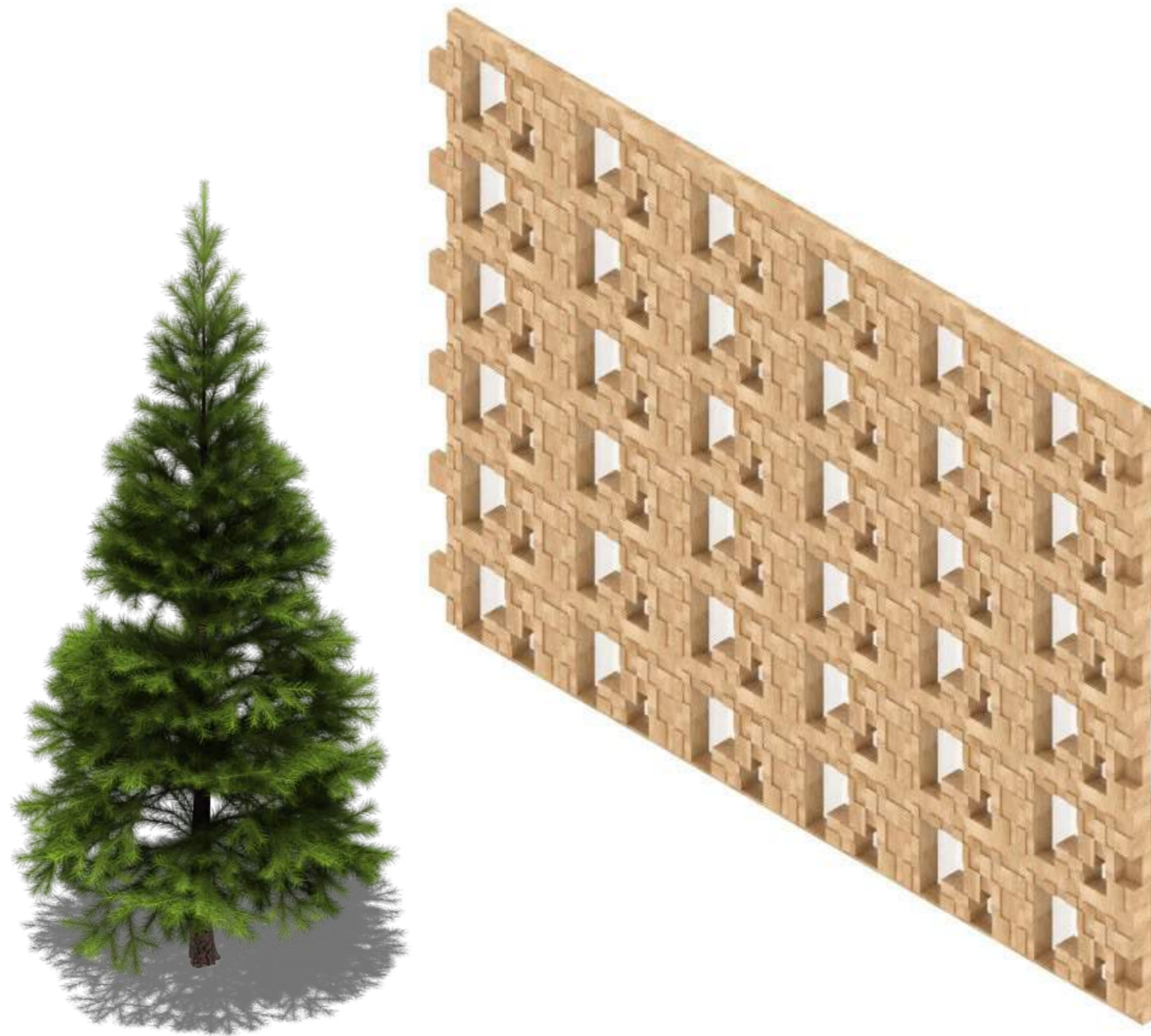




## Scale

---

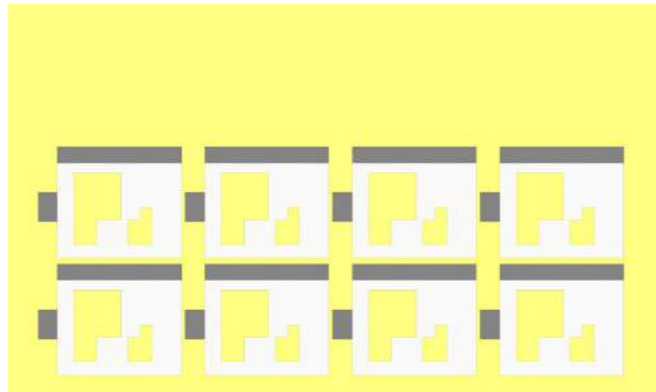
As a result of the simple yet efficient wooden brick facade system, size and dimension of the brick can be changed and adjusted as required.



# Fabrication

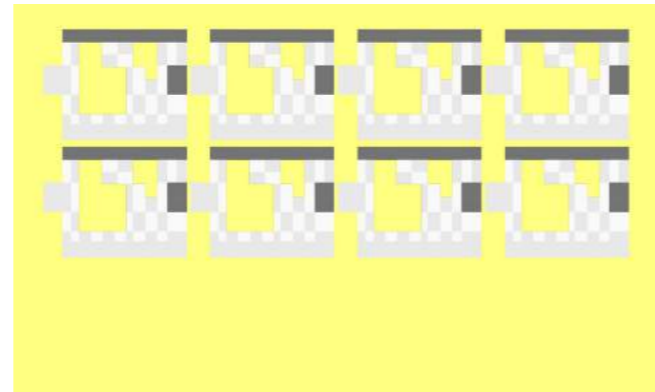
## Double Sided CNC Fabrication

Interior

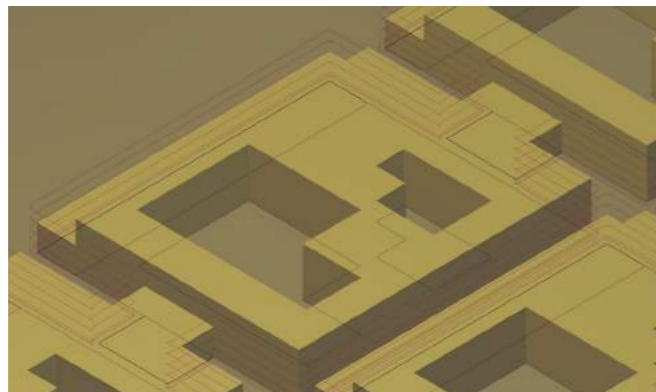
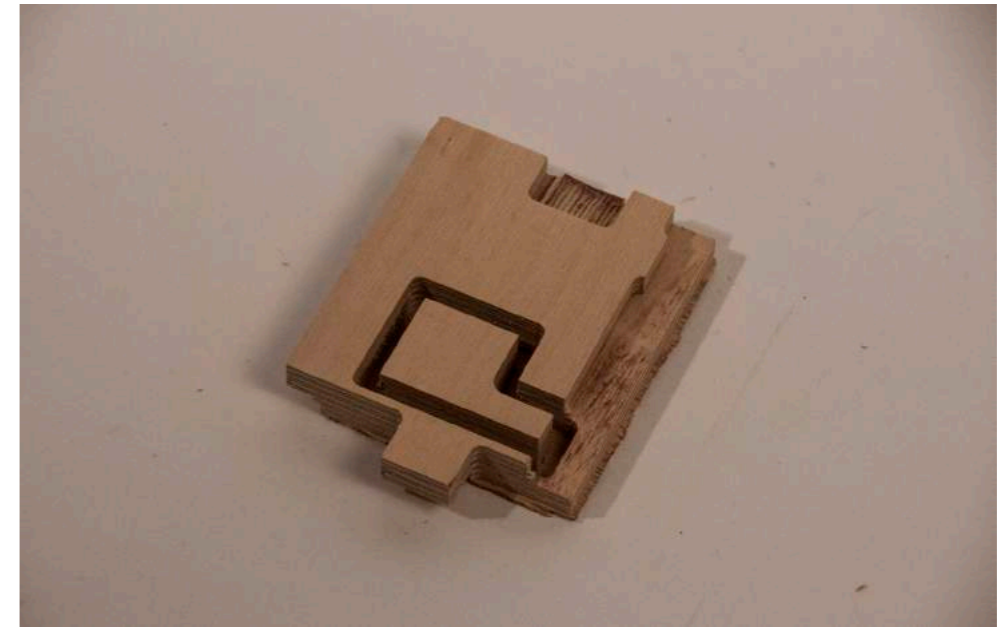


2D View

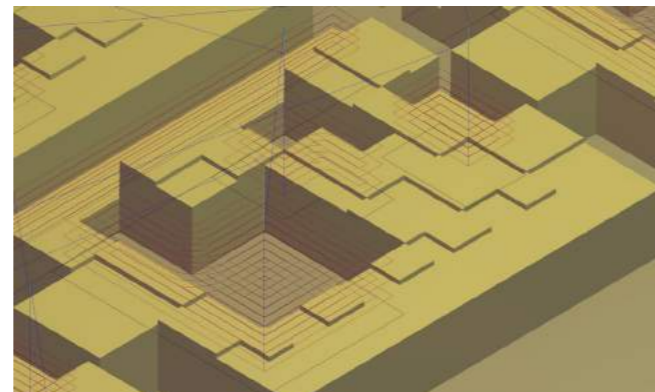
Exterior



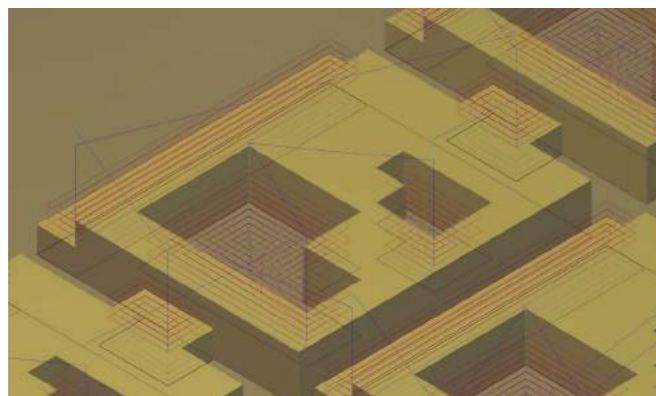
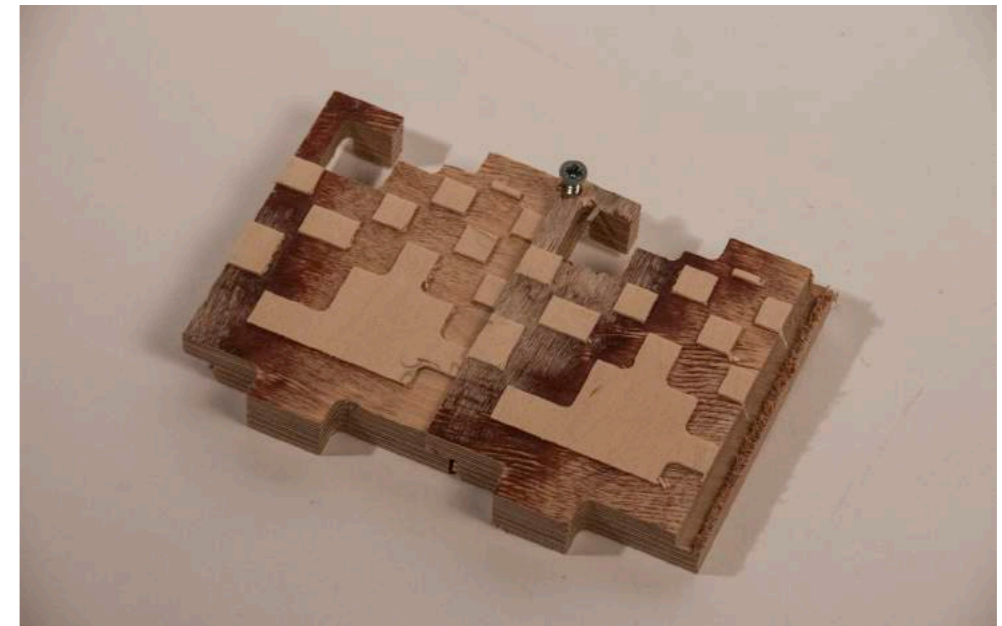
2D View



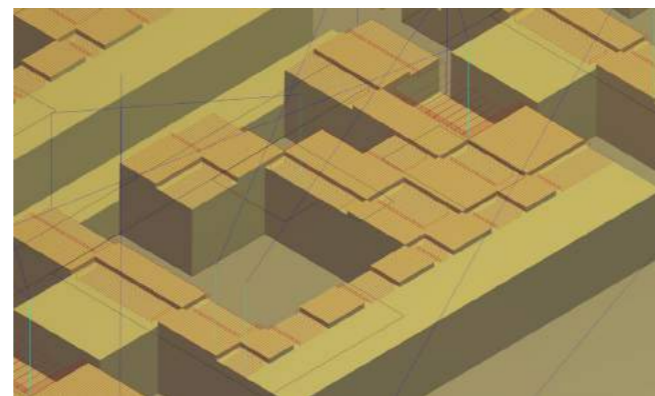
Profile



Clearance



Clearance



Finishing

